

APP CRS	Rwy Idg	4098
058°	TDZE	1121
	Apt Elev	1125

RNAV (GPS) RWY 6

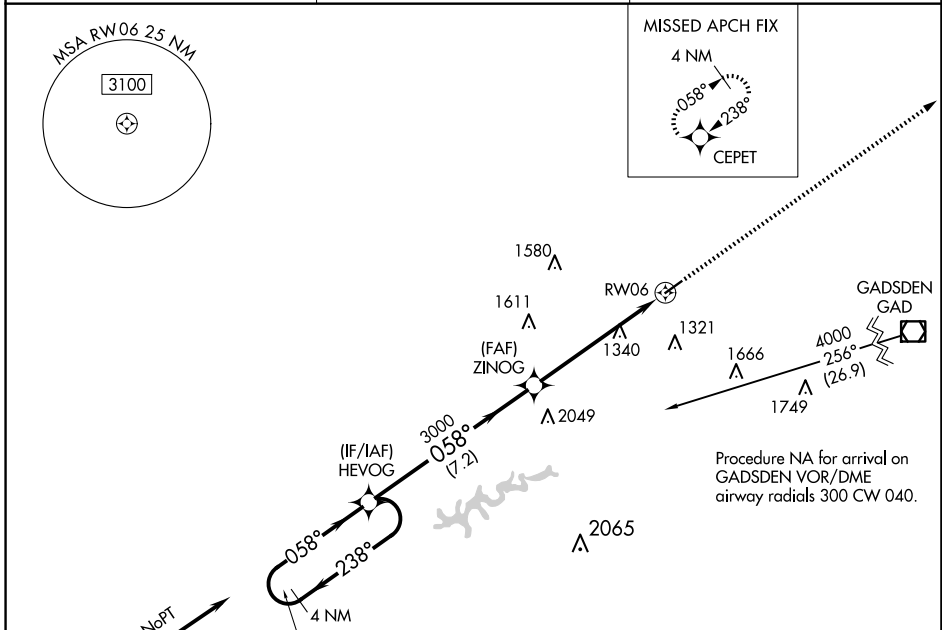
ROBBINS FLD (20A)

RNP APCH.

▼ Procedure NA at night. Use Albertville Rgnl/Thomas J Brumlik Fld altimeter setting, when not received, use Northeast Alabama Rgnl altimeter setting and increase all MDAs 60 feet, increase LNAV Cat C 1/2 SM. Rwy 6 helicopter visibility reduction below 1 SM NA.

▲ NA MISSED APPROACH: Climb to 4000 direct CEPET and hold.

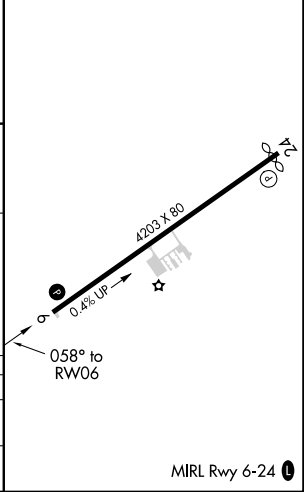
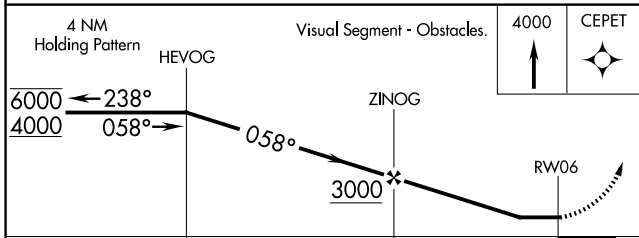
8A0 AWOS-3PT 119.575	BIRMINGHAM APP CON 125.45 279.65	UNICOM 122.8 (CTAF)
--------------------------------	--	-------------------------------



Procedure NA for arrival on VUZ VORTAC airway radials 333 CW 137.

Procedure NA for arrival on GADSDEN VOR/DME airway radials 300 CW 040.

ELEV 1125	D	TDZE 1121
-----------	----------	-----------



CATEGORY	A	B	C	D
LNAV MDA	1760-1	639 (700-1)	1760-1 1/8 639 (700-1 1/8)	NA
CIRCLING	1760-1	635 (700-1)	1800-2 675 (700-2)	NA

SE-4, 20 FEB 2025 to 20 MAR 2025

SE-4, 20 FEB 2025 to 20 MAR 2025