

RNAV (GPS) RWY 35

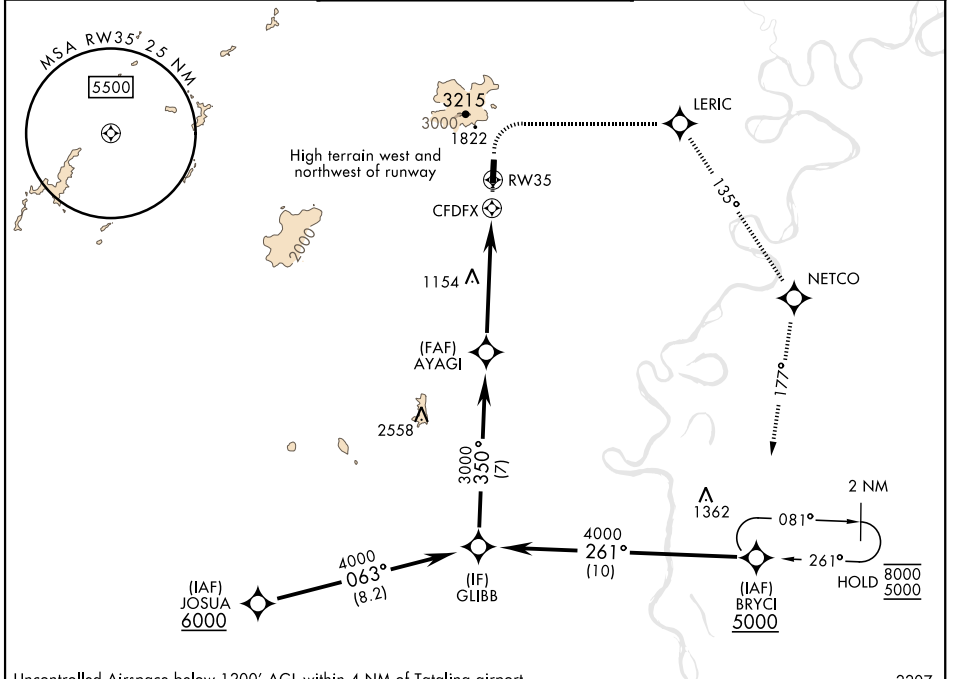
APCH CRS	Rwy Idg	3820
350°	TDZE	925
	Arprt Elev	933

[USAF]

TATALINA LRSS (PATL)

RNP APCH	MISSED APPROACH: (Do not exceed 165 KIAS until initial turn completion). Climb to 1500 then climbing right turn to 5000 direct LERIC, track 135° to NETCO, track 177° to BRYCI and hold.
----------	--

KENAI RADIO 122.3	UNICOM 126.2 (CTAF) 364.2	AWOS-3
----------------------	------------------------------	--------



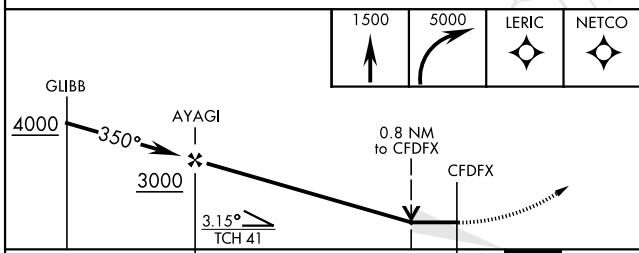
AK, 20 FEB 2025 to 17 APR 2025

AK, 20 FEB 2025 to 17 APR 2025

Uncontrolled Airspace below 1200' AGL within 4 NM of Tatalina airport

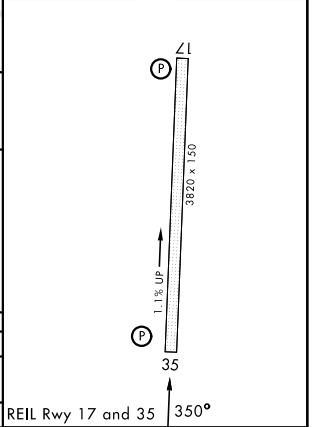
NOT FOR CIVIL USE

MILITARY CERTIFIED AIRCREWS OR AUTHORIZED CONTRACT AIRCRAFT ONLY



CATEGORY	A	B	C	D
LNVA MDA	1500-1¼	575 (600-1¼)	1520-1¾	NOT AUTHORIZED
CIRCLING	NOT AUTHORIZED			

ELEV 933	TDZE 925
----------	----------



RNAV (GPS) RWY 35