

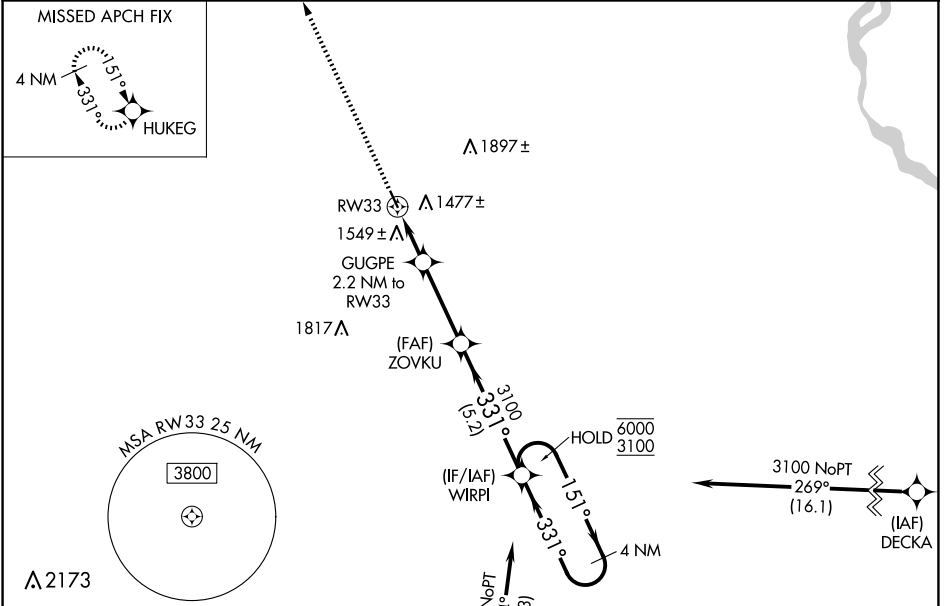
WAAS CH <b>72627</b> <b>W33A</b>	APP CRS <b>331°</b>	Rwy Idg TDZE Apt Elev	<b>3600</b> <b>1343</b> <b>1345</b>
----------------------------------------	------------------------	-----------------------------	-------------------------------------------

# RNAV (GPS) RWY 33

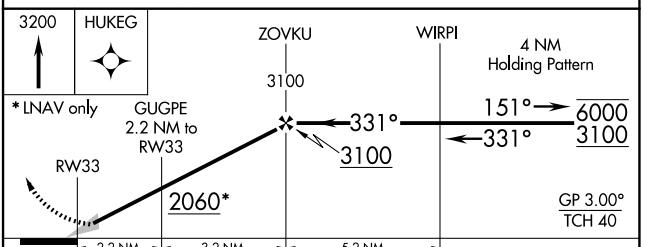
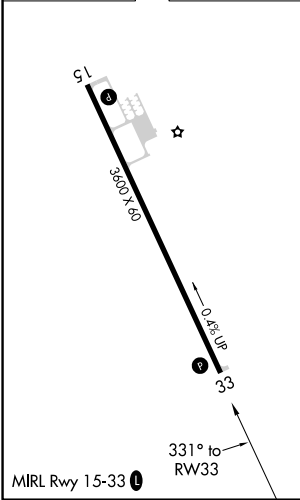
PENDER MUNI (ØC4)

RNP APCH.		MISSED APPROACH: Climb to 3200 direct HUKEG and hold.
<p>▼ Baro-VNAV NA. Use Wayne altimeter setting; when not received, use Sioux City altimeter setting; increase LPV DA to 1681 feet and LNAV/VNAV DA to 1972 feet and all MDAs 60 feet.</p> <p>▲ NA</p>		

LCG AWOS-3 <b>120.125</b>	SIOUX CITY APP CON * <b>124.6 307.0</b>	CTAF <b>122.9</b>
------------------------------	--------------------------------------------	----------------------



ELEV 1345	TDZE 1343
-----------	-----------



CATEGORY	A	B	C	D
LPV DA	1637-1	294 (300-1)		NA
LNAV/VNAV DA	1928-2	585 (600-2)		NA
LNAV MDA	1860-1	517 (600-1)		NA

NC-2, 20 FEB 2025 to 20 MAR 2025

NC-2, 20 FEB 2025 to 20 MAR 2025