

APP CRS 191°	Rwy Idg 5000
	TDZE 54
	Apt Elev 65

RNAV (GPS) RWY 19

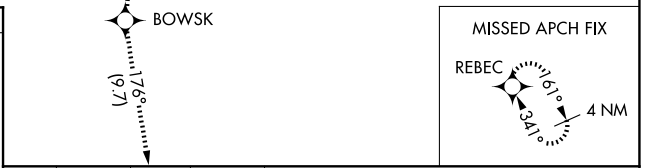
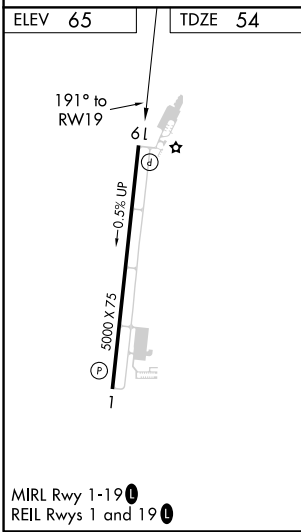
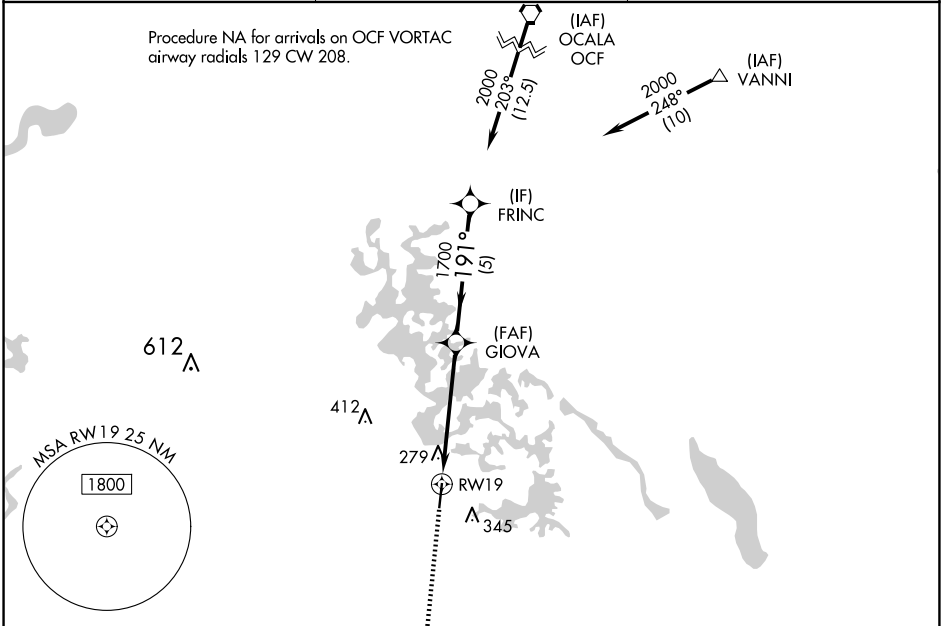
INVERNESS (INF')

RNP APCH.

⚠ MISSED APPROACH: Climb to 2000 direct BOWSK and on track 176° to REBEC and hold.

⚠ Rwy 19 helicopter visibility reduction below 1 SM NA.

AWOS-3 119.975	JACKSONVILLE APP CON 118.6 251.15	UNICOM 122.725 (CTAF) 📻
--------------------------	---	--



2000	BOWSK	REBEC	Visual Segment - Obstacles.		FRINC
↑	Δ	tr 176°	Δ		Δ
			5.1 NM	5 NM	
CATEGORY	A	B	C	D	
LNAV MDA	580-1	526 (600-1)	580-1½ 526 (600-1½)	NA	
CIRCLING	660-1	595 (600-1)	660-1½ 595 (600-1½)	NA	

SE-3, 20 FEB 2025 to 20 MAR 2025

SE-3, 20 FEB 2025 to 20 MAR 2025