

WAAS CH <b>53532</b> <b>W36A</b>	APP CRS <b>002°</b>	Rwy Idg <b>5003</b> TDZE <b>235</b> Apt Elev <b>239</b>
--	------------------------	---

# RNAV (GPS) RWY 36

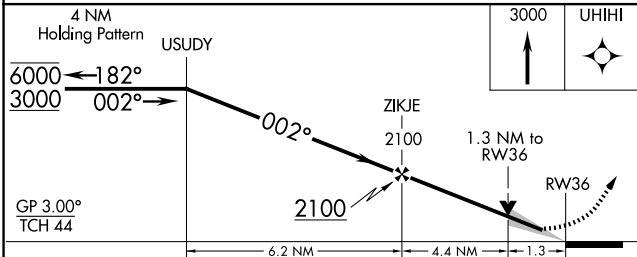
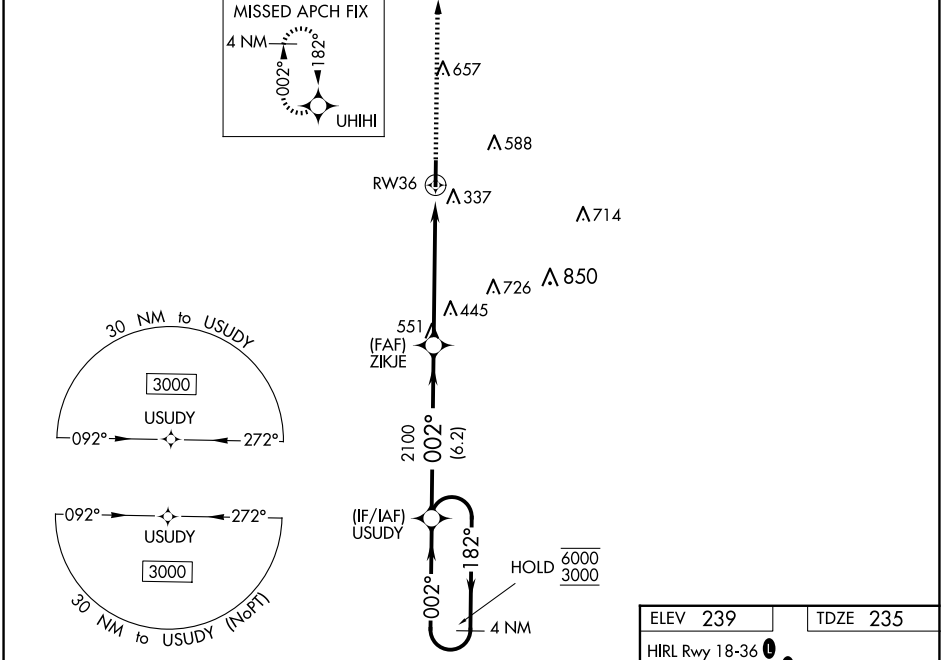
DELTA RGNL (DRP)

RNP APCH - GPS.

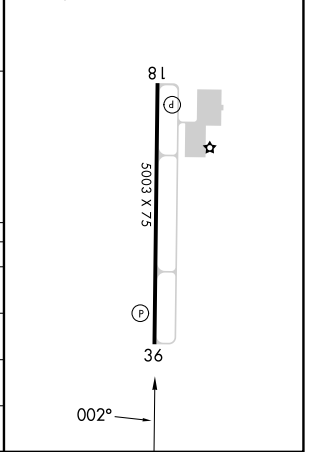
**⚠** Baro-VNAV and VDP NA when using West Memphis altimeter setting. For uncompensated Baro-VNAV systems, LNAV/VNAV NA below -15°C or above 54°C. When local altimeter setting not received, use West Memphis altimeter setting; increase LPV DA to 503 feet and all visibilities ½ SM; increase LNAV/VNAV DA to 755 feet; increase all MDAs 80 feet.

**⚠** MISSED APPROACH: Climb to 3000 direct UHIMI and hold, continue climb-in-hold to 3000.

AWOS-3P <b>120.0</b>	MEMPHIS CENTER <b>135.3 335.8</b>	UNICOM <b>123.0 (CTAF)</b>
-------------------------	--------------------------------------	-------------------------------



ELEV 239	TDZE 235
----------	----------



CATEGORY	A	B	C	D
LPV DA	435-3/4	200 (200-3/4)		NA
LNAV/VNAV DA	687-13/8	452 (500-13/8)		NA
LNAV MDA	700-1	465 (500-1)		NA
<b>C</b> CIRCLING	760-1	521 (600-1)		NA