

APP CRS	Rwy Idg	3000
001°	TDZE	12
	Apt Elev	12

RNAV (GPS) RWY 3

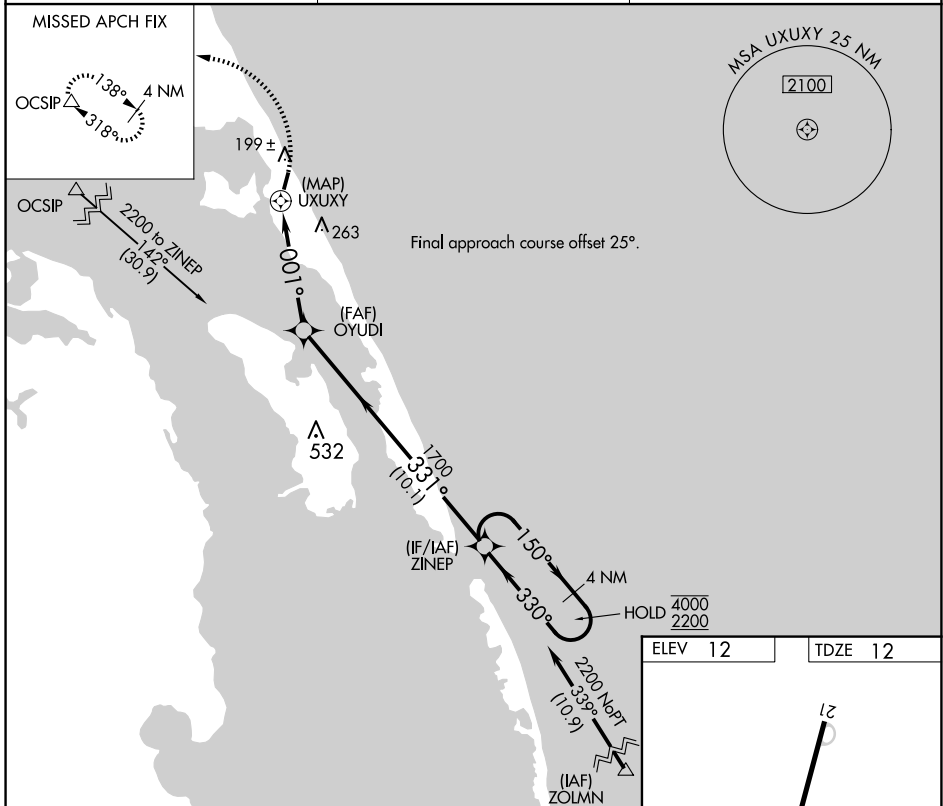
FIRST FLIGHT (F'F'A)

RNP APCH - GPS.

- Procedure NA at night.
- Rwy 3 helicopter visibility reduction below 1 SM NA.

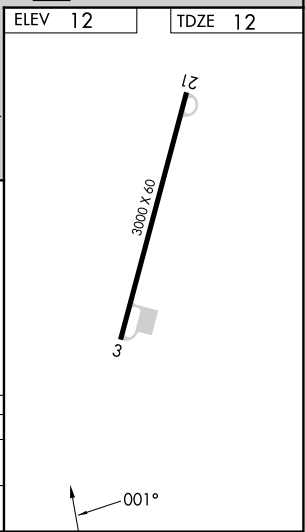
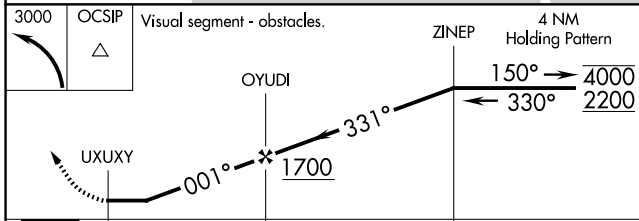
MISSED APPROACH: Climbing left turn to 3000 direct OCSIP and hold.

AWOS-3 118.075	CHERRY POINT APP CON 124.725 350.35	CTAF 122.9
--------------------------	---	----------------------



SE-2, 20 FEB 2025 to 20 MAR 2025

SE-2, 20 FEB 2025 to 20 MAR 2025



CATEGORY	A	B	C	D
LNAV MDA	480-1	468 (500-1)		NA
CIRCLING	520-1 508 (600-1)	540-1 528 (600-1)		NA