

WAAS CH <b>93844</b> <b>W27A</b>	APP CRS <b>267°</b>	Rwy Idg TDZE Apt Elev	<b>3199</b> <b>752</b> <b>752</b>
--	------------------------	-----------------------------	---

# RNAV (GPS) RWY 27

BUFFALO-LANCASTER RGNL (BQR)

RNP APCH - GPS.

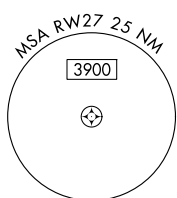
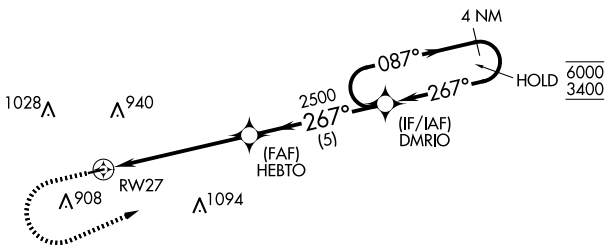
**⚠ NA** Rwy 27 helicopter visibility reduction below 1 SM NA. Baro-VNAV NA. Use Buffalo Niagara Intl altimeter setting. Straight-in Rwy 27 at night, Circling Rwy 27 at night, operational VGSI required, remain on or above VGSI glidepath until threshold.

**MISSED APPROACH:** Climb to 1300 then climbing left turn to 3400 direct DMRIO and hold, continue climb-in-hold to 3400.

BUF ASOS  
**135.35**

BUFFALO APP CON  
**126.15 263.125**

UNICOM  
**123.05 (CTAF) 0**

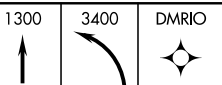


△2448

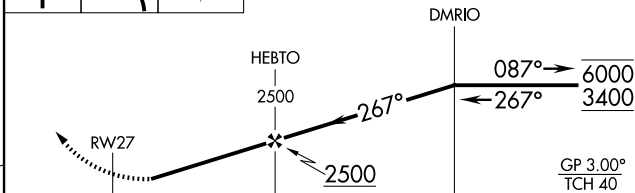
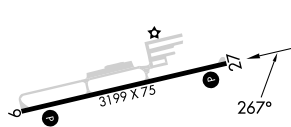
2010△

△2179

ELEV 752	TDZE 752
----------	----------



4 NM Holding Pattern



CATEGORY	A	B	C	D
LPV DA	1070-1	318 (400-1)		NA
LNAV/VNAV DA	1164-1 $\frac{1}{8}$	412 (500-1 $\frac{1}{8}$ )		NA
LNAV MDA	1320-1	568 (600-1)		NA
CIRCLING	1320-1	568 (600-1)		NA

MIRL Rwy 9-27 0  
REIL Rws 9 and 27 0

NE-2, 20 FEB 2025 to 20 MAR 2025

NE-2, 20 FEB 2025 to 20 MAR 2025