

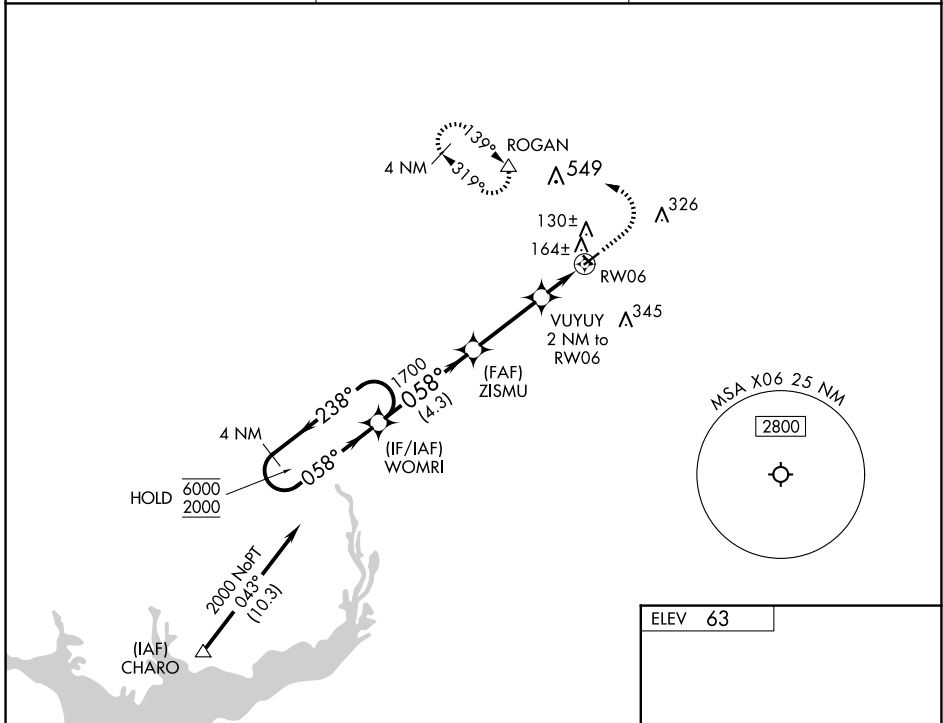
| | | |
|-------------|----------|-----------|
| APP CRS | Rwy Idg | N/A |
| 058° | TDZE | N/A |
| | Apt Elev | 63 |

RNAV (GPS)-A

ARCADIA MUNI (X06)

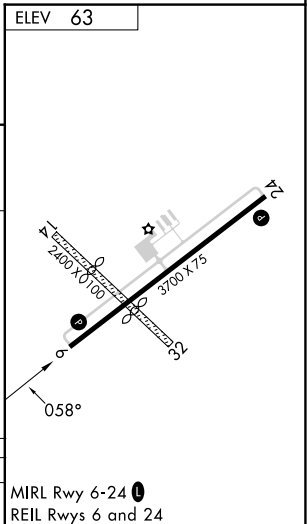
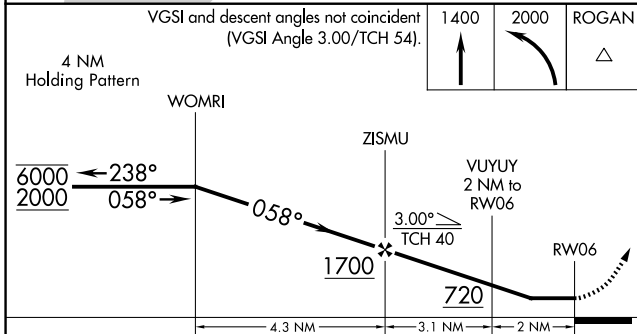
| | |
|---|---|
| RNP APCH - GPS. | MISSED APPROACH: Climb to 1400 then climbing left turn to 2000 direct ROGAN and hold. |
| <p>▼ Circling NA to Rwys 14 and 32. Procedure NA at night.</p> <p>▲ NA Rwy 06, 24 helicopter visibility reduction below 1 SM NA. Use Punta Gorda altimeter setting; when not received, use Sebring altimeter setting and increase all MDAs 40 feet.</p> | |

| | | |
|----------------------------|-------------------------------------|--|
| PGD ASOS 135.675 | MIAMI CENTER 134.55 257.7 | UNICOM 123.0 (CTAF) 0 |
|----------------------------|-------------------------------------|--|



SE-3, 20 FEB 2025 to 20 MAR 2025

SE-3, 20 FEB 2025 to 20 MAR 2025



| | | | | |
|-------------------|----------------------|----------------------|----|---|
| CATEGORY | A | B | C | D |
| C CIRCLING | 560-1 497 (500-1) | 700-1 637 (700-1) | NA | |