

APP CRS	Rwy Idg	N/A
345°	TDZE	N/A
	Apt Elev	320

RNAV (GPS)-B

POPLARVILLE/PEARL RIVER COUNTY (M13)

RNP APCH-GPS.

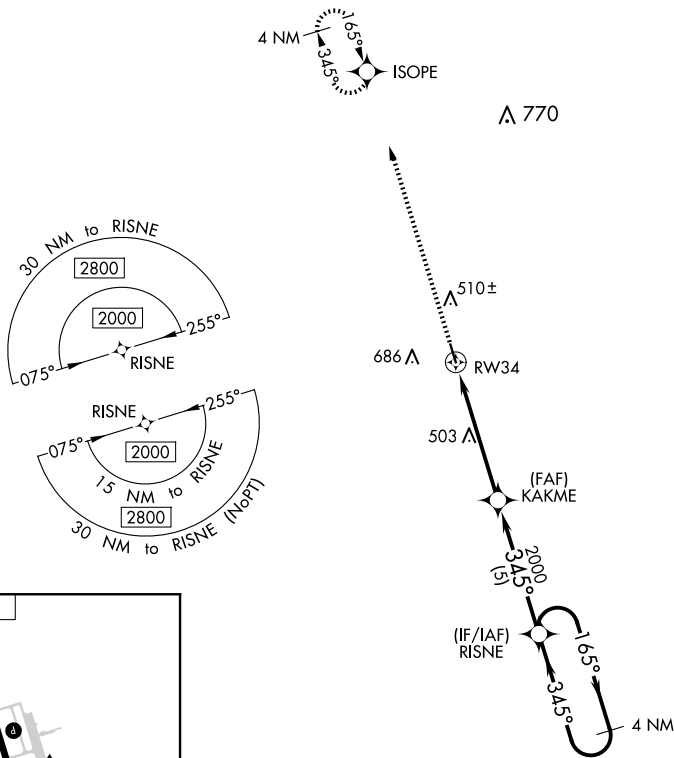
▼ Use Bogalusa altimeter setting; when not received, use Hattiesburg altimeter setting and increase all MDA 40 feet and increase Circling Cat B/C/D visibility ¼ mile. Helicopter visibility reduction below 1 SM NA. Procedure NA at night.
▲ NA

MISSED APPROACH: Climb to 2100 direct ISOPE and hold.

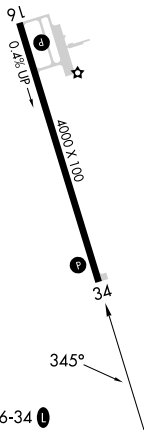
BXA AWOS-3PT
118.025

GULFPORT APP CON ★
124.6 354.1

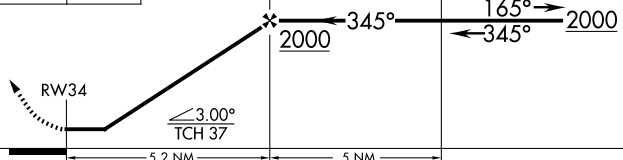
CTAF
122.9 0



ELEV 320



2100 ISOPE VGSI and RNAV glidepath not coincident (VGSI Angle 3.00°/TCH 41).
 KAKME RISNE 4 NM Holding Pattern



CATEGORY	A	B	C	D
C CIRCLING	880-1 560 (600-1)	1120-1 800 (800-1)	1120-2¼ 800 (800-2¼)	1120-2½ 800 (800-2½)