

| | | | |
|--|------------------------|-----------------------------|---|
| WAAS CH 81839 W13A | APP CRS 133° | Rwy Idg TDZE Apt Elev | 5701 2948 2965 |
|--|------------------------|-----------------------------|---|

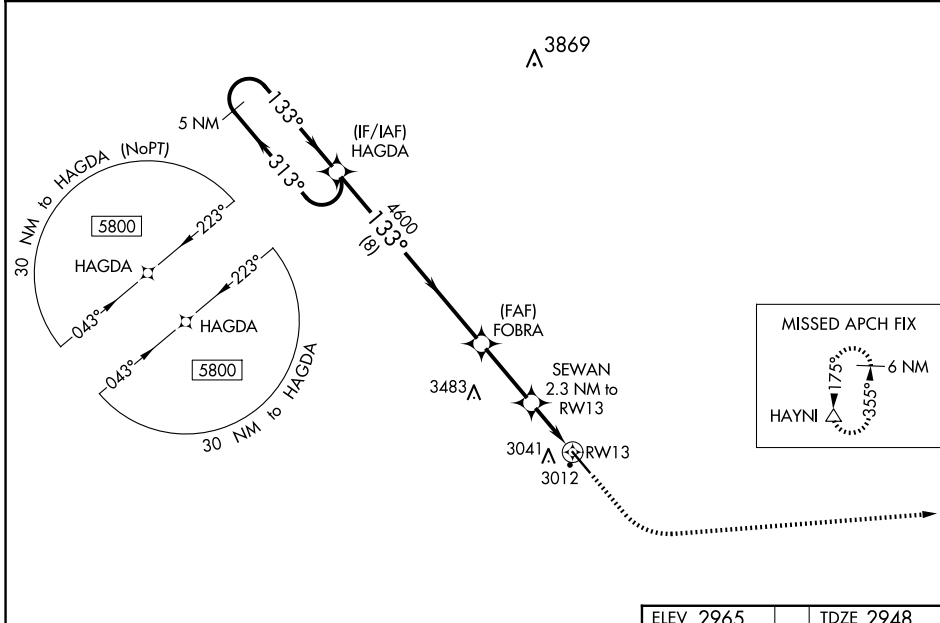
RNAV (GPS) RWY 13

BOWMAN RGNL (BWW)

⚠ For uncompensated Baro-VNAV systems, LNAV/VNAV NA below -20°C (-4°F) or above 54°C (130°F). DME/DME RNP-0.3 NA. When local altimeter setting not received, use Hettinger altimeter setting and increase all DA 102 feet, and all MDA 120 feet; increase LPV and LNAV/VNAV visibility ¼ mile all Cats, and LNAV Cat C visibility ⅓ mile. Baro-VNAV and VDP NA when using Hettinger altimeter setting.

MISSED APPROACH: Climb to 3400 then climbing left turn to 6000 direct HAYNI and hold.

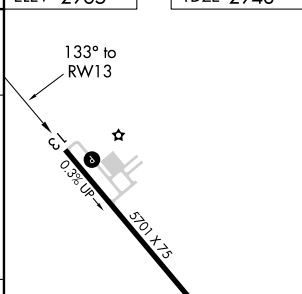
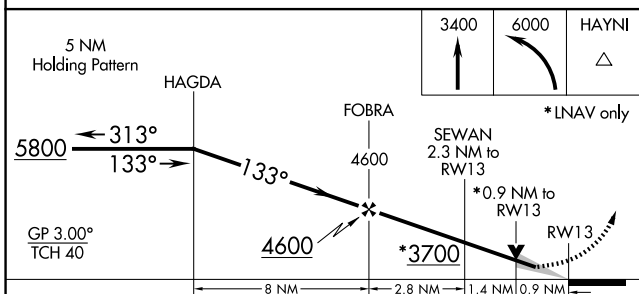
| | | |
|----------------------------|--|---------------------------------|
| AWOS-3PT 118.075 | SALT LAKE CITY CENTER 126.85 305.2 | UNICOM 122.8 (CTAF) 1 |
|----------------------------|--|---------------------------------|



NC-1, 20 FEB 2025 to 20 MAR 2025

NC-1, 20 FEB 2025 to 20 MAR 2025

| | |
|-----------|-----------|
| ELEV 2965 | TDZE 2948 |
|-----------|-----------|



| CATEGORY | A | B | C | D |
|-------------------|-----------------------|-----------------------|-------------------------|-----------------------|
| LPV DA | | 3198-1 | 250 (300-1) | |
| LNAV/VNAV DA | | 3198-1 | 250 (300-1) | |
| LNAV MDA | | 3280-1 | 332 (400-1) | |
| C CIRCLING | 3380-1 415 (500-1) | 3420-1 455 (500-1) | 3580-1¾ 615 (700-1¾) | 3580-2 615 (700-2) |

REIL Rwy 13 and 31 **1**
MIRL Rwy 13-31 **1**