

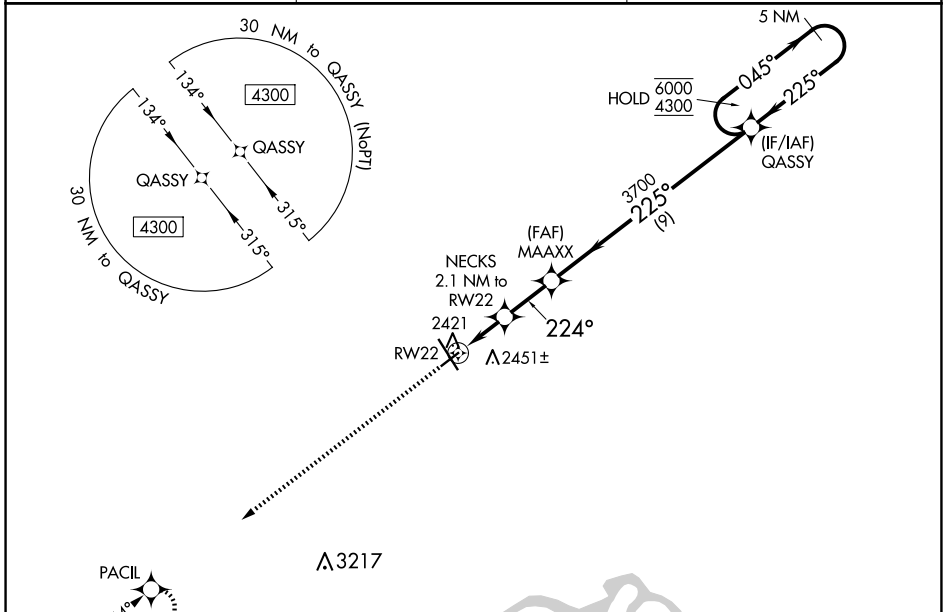
WAAS CH 93943 W22A	APP CRS 224°	Rwy Idg TDZE Apt Elev	4502 2339 2356
--	------------------------	-----------------------------	---

RNAV (GPS) RWY 22

WILLISTON BASIN INTL (XWA)

RNP APCH-GPS.	MISSED APPROACH: Climb to 4300 direct PACIL and hold.
<p>For uncompensated Baro-VNAV systems, LNAV/VNAV NA below -19°C or above 54°C.</p>	

ASOS 125.925	SALT LAKE CITY CENTER 126.85 305.2	UNICOM 122.8 (CTAF)
------------------------	--	-------------------------------



ELEV 4300	PACIL	QASSY			
↑	✧	NECKS 2.1 NM to RWY 22	MAAXX 3700	5 NM Holding Pattern	
*LNAV only		*1.2 NM to RWY 22		045° → 6000	← 225° 4300
				GP 3.00°	TCH 40
				3020*	
				224°	
				3700	
				9 NM	
				1.2 NM	
				0.9 NM	
				2.1 NM	
CATEGORY	A	B	C	D	
LPV DA	2539-1		200 (200-1)		
LNAV/VNAV DA	2589-1		250 (300-1)		
LNAV MDA	2740-1	401 (400-1)	2740-1 ¹ / ₈	401 (400-1 ¹ / ₈)	
CIRCLING	2760-1 404 (500-1)	2820-1 464 (500-1)	2820-1 ¹ / ₂ 464 (500-1 ¹ / ₂)	2920-2 564 (600-2)	

