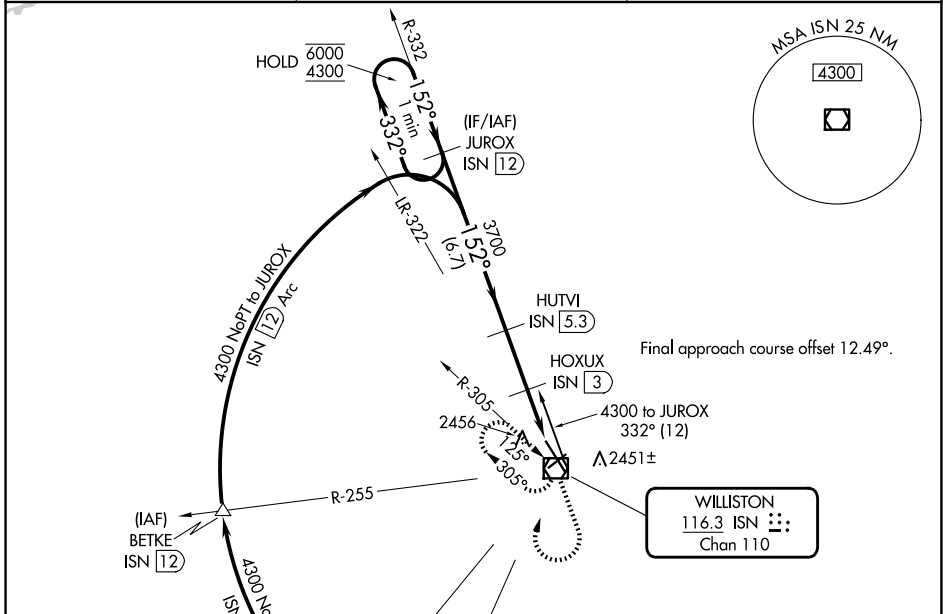


VOR/DME ISN 116.3 Chan 110	APP CRS 152°	Rwy Idg TDZE Apt Elev	7503 2318 2356
--	------------------------	-----------------------------	---

VOR RWY 14
WILLISTON BASIN INTL (XWA)

DME required. ▼ ▲	MISSED APPROACH: Climb to 4300 then climbing right turn to 4300 direct ISN VOR/DME and hold
-------------------------	---

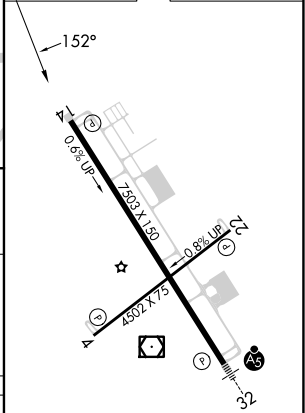
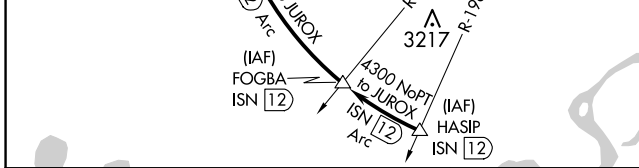
ASOS 125.925	SALT LAKE CITY CENTER 126.85 305.2	UNICOM 122.8 (CTAF) 0
------------------------	--	---------------------------------



NC-1, 20 FEB 2025 to 20 MAR 2025

NC-1, 20 FEB 2025 to 20 MAR 2025

ELEV 2356	D	TDZE 2318
-----------	---	-----------



One Minute Holding Pattern	JUROX ISN 12	HUTVI ISN 5.3	4300	4300	ISN
6000 ← 332°	→ 152°	→ 152°	3700	2800	ISN 2.2, ISN 1
4300					
	6.7 NM	2.3 NM	0.8 NM	1.2 NM	

CATEGORY	A	B	C	D
S-14	2720-1	402 (400-1)	2720-1½	402 (400-1½)
CIRCLING	2760-1 404 (500-1)	2820-1 464 (500-1)	2820-1½ 464 (500-1½)	2920-2 564 (600-2)

MIRL Rwy 4-22
HIRL Rwy 14-32
REIL Rwy 4, 14 and 22