

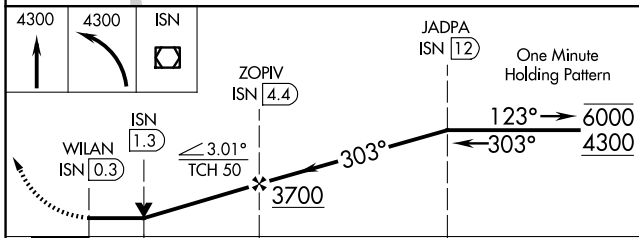
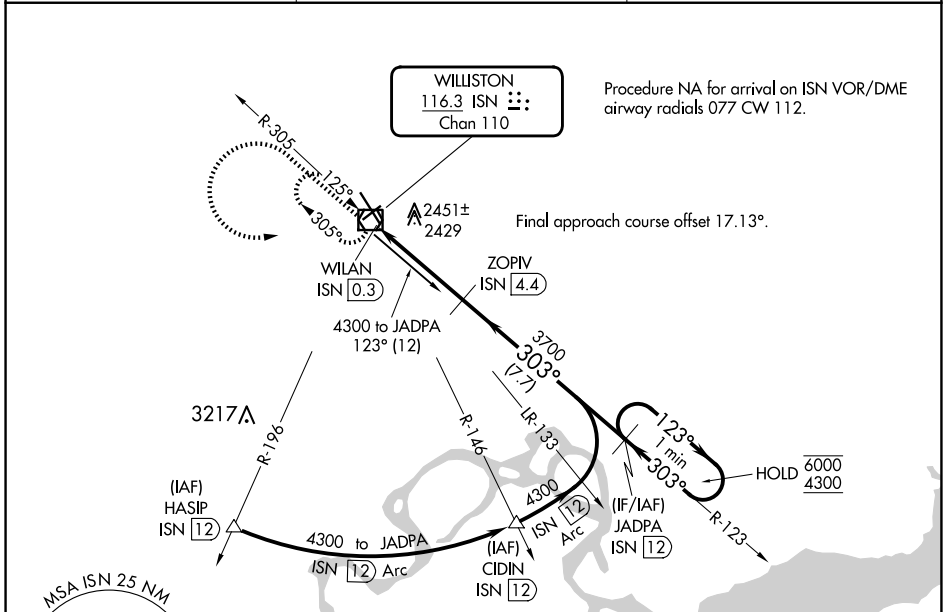
VOR/DME ISN 116.3 Chan 110	APP CRS 303°	Rwy Idg TDZE Apt Elev	7503 2350 2353
--	------------------------	-----------------------------	---

VOR RWY 32

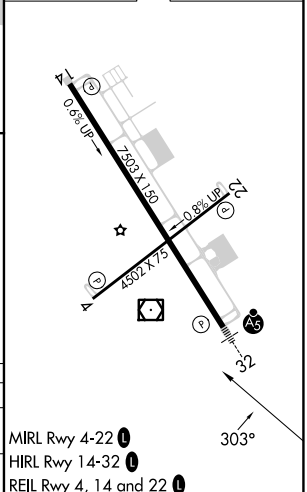
WILLISTON BASIN INTL (XWA)

DME required.		MALSR	MISSED APPROACH: Climb to 4300 then climbing left turn to 4300 direct ISN VOR/DME and hold
<p>For inop ALS, increase S-32 Cats C/D visibility to 1½ SM.</p>			

ASOS 125.925	SALT LAKE CITY CENTER 126.85 305.2	UNICOM 122.8 (CTAF)
------------------------	--	-------------------------------



ELEV 2353	TDZE 2350
-----------	-----------



CATEGORY	A	B	C	D
S-32	2740-½ 390 (400-½)		2740-¾ 390 (400-¾)	
CIRCLING	2760-1 407 (500-1)	2820-1 467 (500-1)	2820-1½ 467 (500-1½)	2920-2 567 (600-2)

NC-1, 20 FEB 2025 to 20 MAR 2025

NC-1, 20 FEB 2025 to 20 MAR 2025