

WAAS CH <b>82242</b> <b>W17A</b>	APP CRS <b>173°</b>	Rwy Idg TDZE Apt Elev	<b>5500</b> <b>1409</b> <b>1409</b>
--	------------------------	-----------------------------	---

# RNAV (GPS) RWY 17

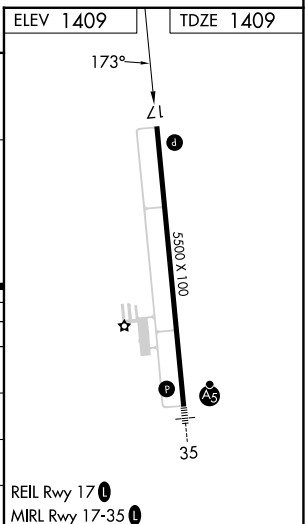
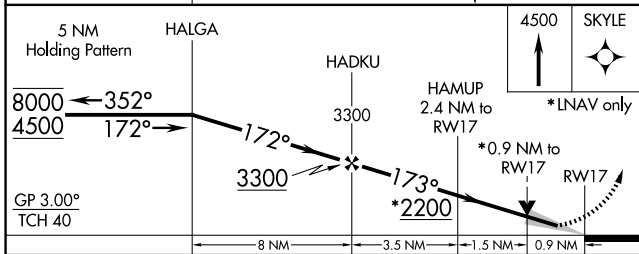
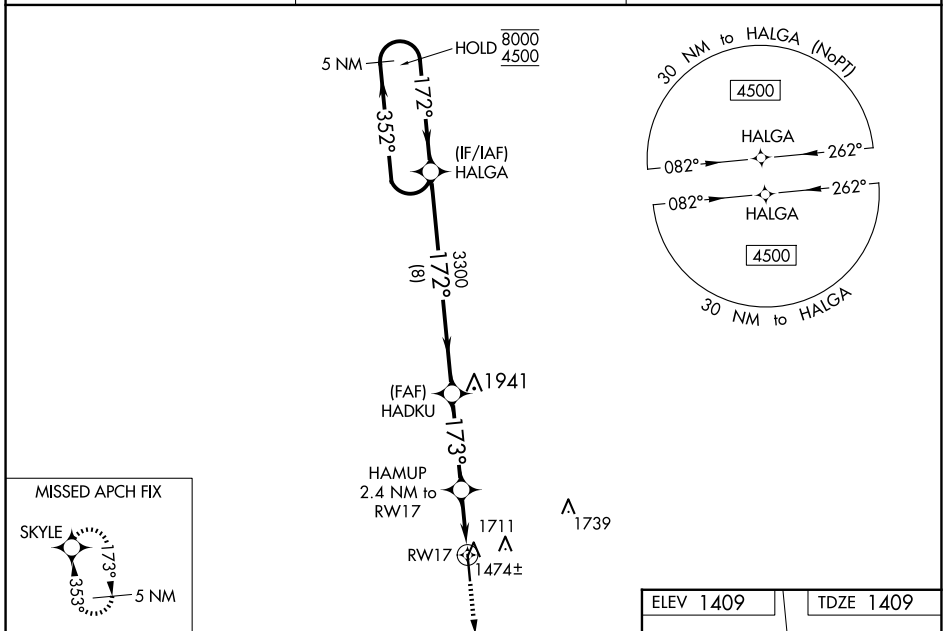
SIoux COUNTY RGNL (SXX)

RNP APCH.

**⚠** Baro-VNAV and VDP NA when using Le Mars altimeter setting. For uncompensated Baro-VNAV systems, LNAV/VNAV NA below -17°C or above 34°C. When local altimeter setting not received, use Le Mars altimeter setting: increase DA 59 feet and all MDA 60 feet. Increase LNAV/VNAV all Cats visibility to ½ SM and LNAV Cat C/D visibilities to ¾ SM.

MISSED APPROACH: Climb to 4500 direct SKYLE and hold.

AWOS-3P <b>120.075</b>	SIoux CITY APP CON * <b>124.6 307.0</b>	UNICOM <b>122.7 (CTAF)</b>
---------------------------	--	-------------------------------



CATEGORY	A	B	C	D
LPV DA		1609-¾	200 (200-¾)	
LNAV/VNAV DA		1659-¾	250 (300-¾)	
LNAV MDA		1740-1	331 (400-1)	
CIRCLING	1820-1 411 (500-1)	2080-1 671 (700-1)	2080-2 671 (700-2)	2080-2¼ 671 (700-2¼)

NC-3, 20 FEB 2025 to 20 MAR 2025

NC-3, 20 FEB 2025 to 20 MAR 2025