

WAAS CH <b>52885</b> <b>W36A</b>	APP CRS <b>357°</b>	Rwy Idg TDZE <b>1711</b> Apt Elev <b>1711</b>	<b>6536</b>
--	------------------------	---	-------------

# RNAV (GPS) RWY 36

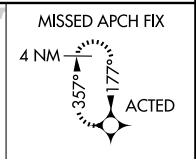
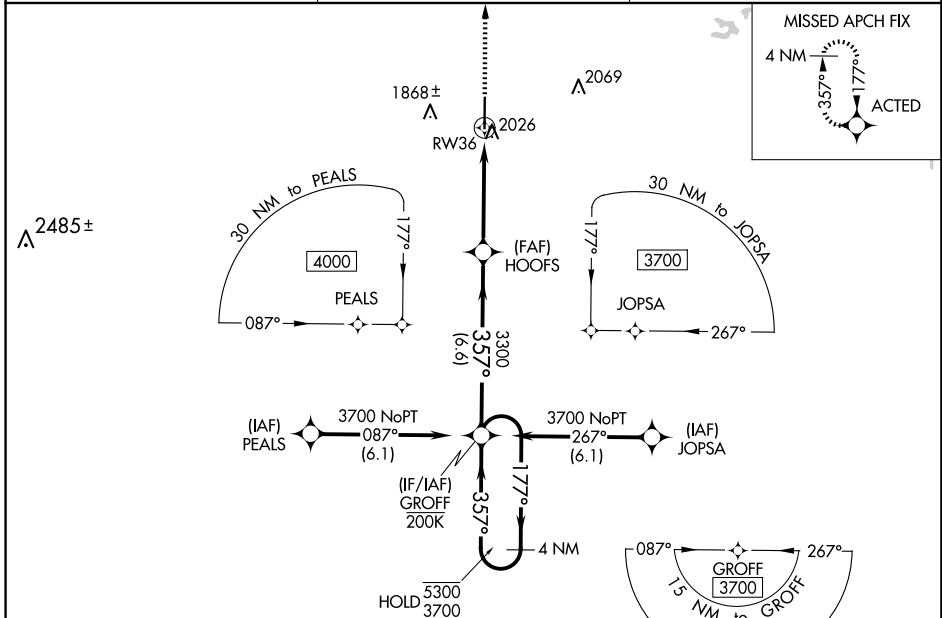
GREGORY M SIMMONS MEML (GZN)

RNP APCH - GPS.

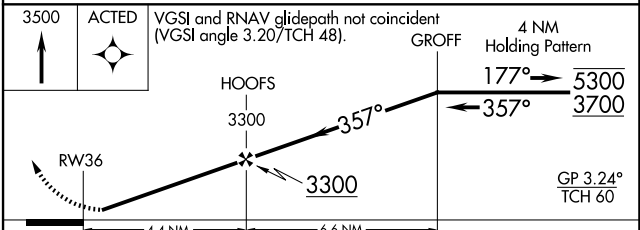
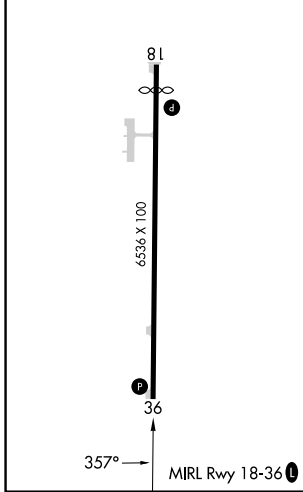
▼ Circling NA east of Rwy 18-36. Baro-VNAV NA when using Eastland altimeter setting. For uncompensated Baro-VNAV systems, LNAV/VNAV NA below -18°C or above 54°C. When local altimeter setting not received, use Eastland altimeter setting and increase LPV DA to 2023 feet; increase LNAV/VNAV DA to 2249 feet and all visibilities ½ SM. Increase all MDAs 80 feet and LNAV visibility Cat C/D ¼ SM, and Circling visibility Cat C ¼ SM. Rwy 36 helicopter visibility reduction below 1 SM NA.

MISSED APPROACH:  
Climb to 3500 direct  
ACTED and hold.

AWOS-4 <b>118.0</b>	ABILENE APP CON <b>125.0 338.3</b>	CTAF <b>122.9</b>
------------------------	---------------------------------------	----------------------



ELEV 1711	<b>D</b>	TDZE 1711
-----------	----------	-----------



3500 ACTED	VGSi and RNAV glidepath not coincident (VGSi angle 3.20/TCH 48).			4 NM Holding Pattern
				177° → 5300 ← 357° 3700
				GP 3.24° TCH 60
CATEGORY	A	B	C	D
LPV DA	1961-1		250 (300-1)	
LNAV/VNAV DA	2187-1½		476 (500-1½)	
LNAV MDA	2280-1	569 (600-1)	2280-1½	569 (600-1½)
CIRCLING	2280-1	569 (600-1)	2280-1½	2600-3 889 (900-3)

SC-2, 20 FEB 2025 to 20 MAR 2025

SC-2, 20 FEB 2025 to 20 MAR 2025