

WAAS CH <b>41250</b> <b>W18A</b>	APP CRS <b>177°</b>	Rwy Idg TDZE <b>1711</b> Apt Elev <b>1711</b>	<b>6064</b>
--	------------------------	---	-------------

# RNAV (GPS) Y RWY 18

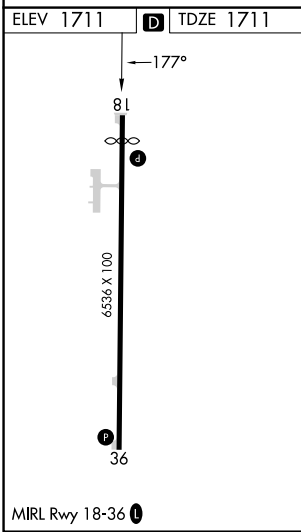
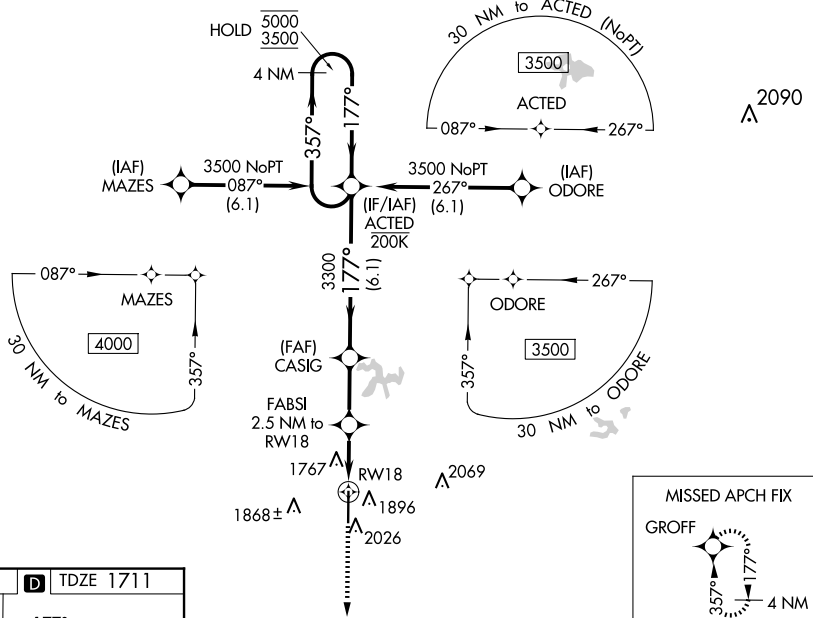
GREGORY M SIMMONS MEML (GZN)

**RNP APCH - GPS.**

**⚠** Circling NA east of Rwy 18-36. Baro-VNAV and VDP NA when using Eastland altimeter setting. For uncompensated Baro-VNAV systems, LNAV/VNAV NA below -18°C or above 54°C. When local altimeter setting not received, use Eastland altimeter setting and increase LPV DA to 2023 feet; increase LNAV/VNAV DA to 2067 feet; increase all MDAs 80 feet and LNAV visibility Cat C/D 3/8 SM. Rwy 18 helicopter visibility reduction below 3/8 SM NA.

**MISSED APPROACH:**  
Climb to 3700 direct GROFF and hold.

<b>AWOS-4</b> <b>118.0</b>	<b>ABILENE APP CON</b> <b>125.0 338.3</b>	<b>CTAF</b> <b>122.9</b>
-------------------------------	--	-----------------------------



3700	GROFF	4 NM Holding Pattern		
CASIG	FABSI 2.5 NM to RWY 18	ACTED		
3300	1 NM to RWY 18	357° 5000 ←177° 3500		
2540	1 NM 1.5 NM 2.4 NM 6.1 NM	GP 3.00° TCH 45		
CATEGORY	A	B	C	D
LPV DA	1961-1		250 (300-1)	
LNAV/VNAV DA	1985-1		274 (300-1)	
LNAV MDA	2060-1		349 (400-1)	
CIRCLING	2140-1 429 (500-1)	2180-1 469 (500-1)	2180-1½ 469 (500-1½)	2600-3 889 (900-3)

SC-2, 20 FEB 2025 to 20 MAR 2025

SC-2, 20 FEB 2025 to 20 MAR 2025