

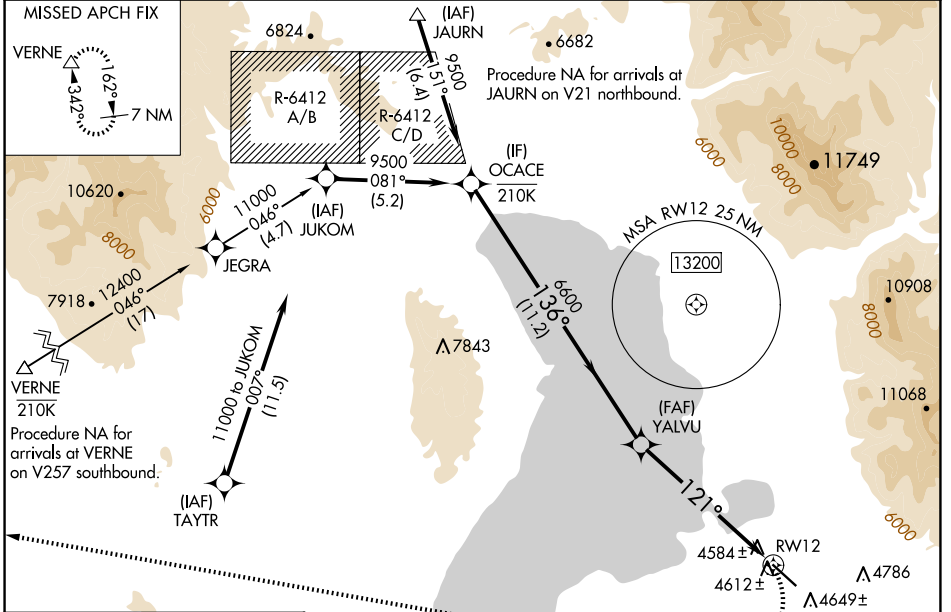
WAAS CH <b>78042</b> <b>W12A</b>	APP CRS <b>121°</b>	Rwy Idg TDZE Apt Elev	<b>6500</b> <b>4527</b> <b>4530</b>
--	------------------------	-----------------------------	---

# RNAV (GPS) Y RWY 12

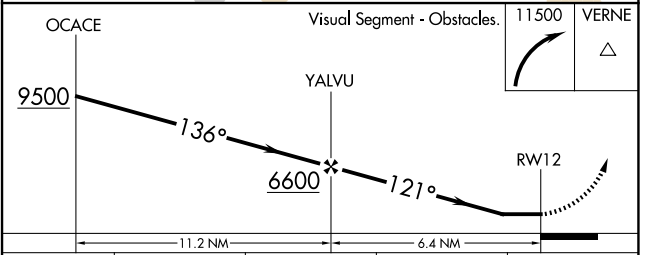
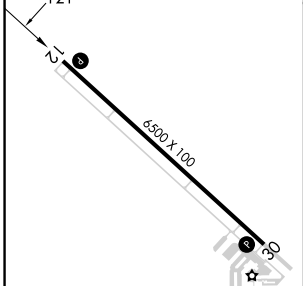
SPANISH FORK MUNI/WOODHOUSE FLD (SPK)

RNP APCH - GPS.	<p><b>⚠</b> Rwy 12 helicopter visibility reduction below 3/4 SM NA. When local altimeter setting not received, use PVU altimeter setting and increase all MDAs 20 feet. Circling NA for Cat D northeast of Rwy 12-30.</p>	<p><b>⚠</b> MISSED APPROACH: (Do not exceed 185K until turn completion) Climbing right turn to 11500 direct VERNE and hold.</p>
-----------------	---	---

AWOS-3PT <b>119.275</b>	SALT LAKE CITY APP CON <b>118.85 233.7</b>	CTAF <b>122.9</b>
----------------------------	---	----------------------



ELEV <b>4530</b>	TDZE <b>4527</b>
------------------	------------------



CATEGORY	A	B	C	D
LP MDA	6040-1¼ 1513 (1600-1¼)	6040-1½ 1513 (1600-1½)	6040-3	1513 (1600-3)
LNAV MDA	6160-1¼ 1633 (1700-1¼)	6160-1½ 1633 (1700-1½)	6160-3	1633 (1700-3)
<b>C</b> CIRCLING	6160-1¼ 1630 (1700-1¼)	6160-1½ 1630 (1700-1½)	6160-3	1630 (1700-3)

SW-4, 20 FEB 2025 to 20 MAR 2025

SW-4, 20 FEB 2025 to 20 MAR 2025