

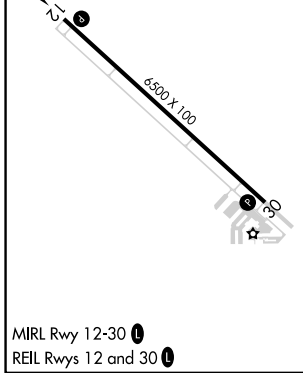
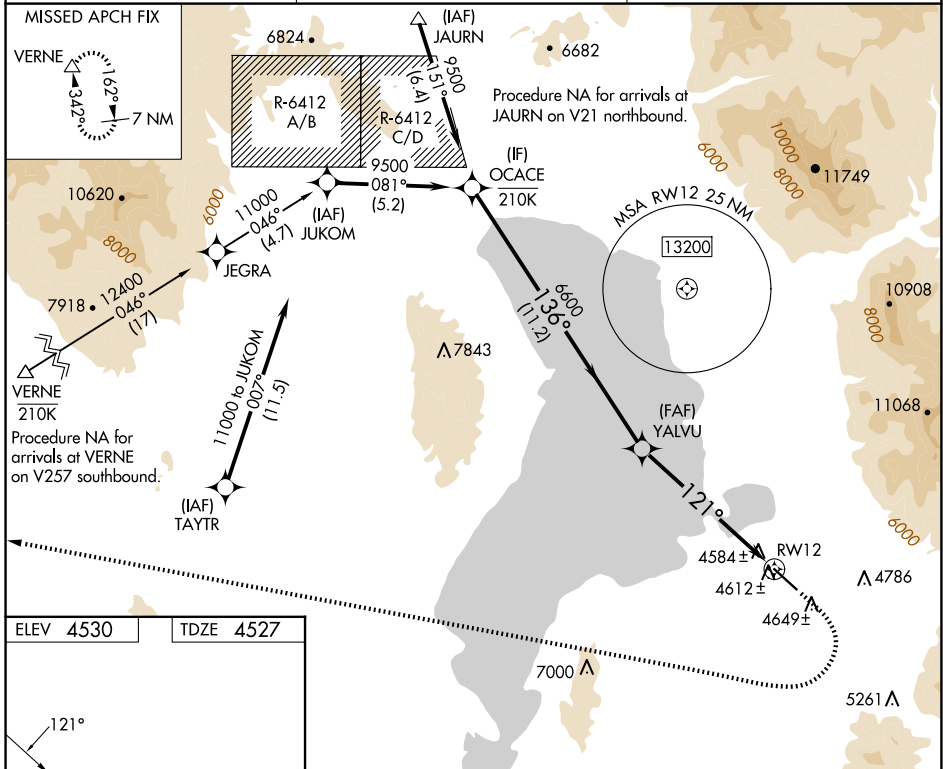
WAAS CH <b>82342</b> <b>W12B</b>	APP CRS <b>121°</b>	Rwy Idg TDZE Apt Elev	<b>6500</b> <b>4527</b> <b>4530</b>
--	------------------------	-----------------------------	---

# RNAV (GPS) Z RWY 12

SPANISH FORK MUNI/WOODHOUSE FLD (SPK)

RNP APCH - GPS.	<p><b>⚠</b> Rwy 12 helicopter visibility reduction below 3/4 SM NA. When local altimeter setting not received, use PVU altimeter setting and increase all MDAs 20 feet.</p> <p><b>⚠</b> NA</p> <p><b>⚠</b> -21°C</p>	<p><b>MISSED APPROACH:</b> (Do not exceed 185K until VERNE) Climb to 5000 then climbing right turn to 11500 direct VERNE and hold.</p> <p>*Missed approach requires minimum climb of 380 feet per NM to 7600; if unable to meet climb gradient, see RNAV (GPS) Y RWY 12.</p>
-----------------	--	--

AWOS-3PT <b>119.275</b>	SALT LAKE CITY APP CON <b>118.85 233.7</b>	CTAF <b>122.9</b>
----------------------------	---	----------------------



OCACE	Visual Segment - Obstacles.			5000	11500	VERNE
9500	YALVU			↑	↷	△
	136°	6600	121°			
	11.2 NM	6.4 NM				
CATEGORY	A	B	C	D		
LP MDA*	4980-1	453 (500-1)	4980-1 3/8	453 (500-1 3/8)		
LNAV MDA*	4980-1	453 (500-1)	4980-1 3/8	453 (500-1 3/8)		

SW-4, 20 FEB 2025 to 20 MAR 2025

SW-4, 20 FEB 2025 to 20 MAR 2025