

WAAS CH 56541 W16A	APP CRS 167°	Rwy Idg TDZE Apt Elev	4201 4132 4138
--	------------------------	-----------------------------	---

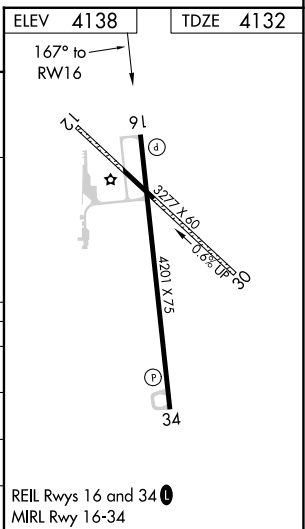
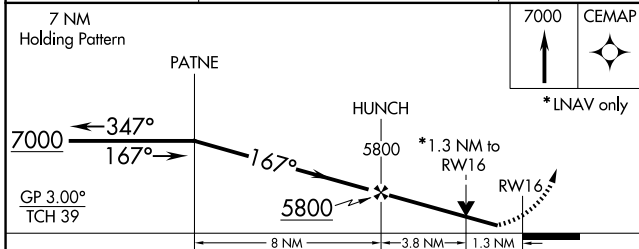
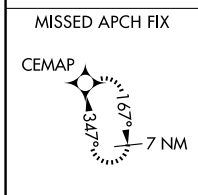
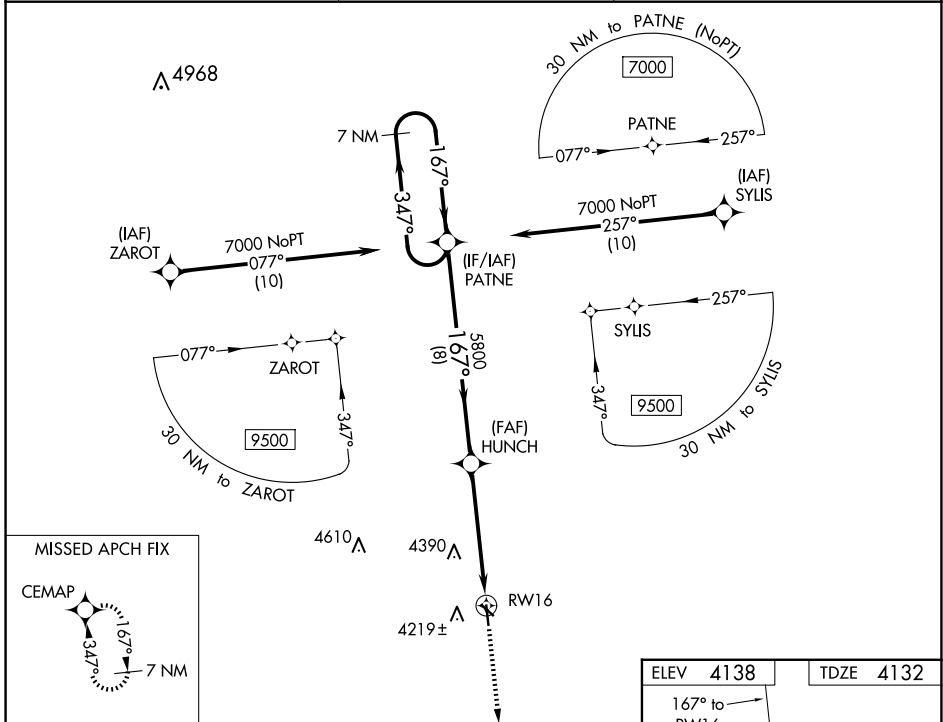
RNAV (GPS) RWY 16

YUMA MUNI (2V6)

⚠ Circling NA to Rwy 12 and 30. For uncompensated Baro-VNAV systems, LNAV/VNAV NA below -23°C (-9°F) or above 54°C (130°F). Rwy 16 helicopter visibility reduction below ¾ SM NA. DME/DME RNP-0.3 NA.

MISSED APPROACH: Climb to 7000 direct CEMAP and hold.

AWOS-3 135.375	DENVER CENTER 133.95 317.55	UNICOM 122.8 (CTAF) 1
--------------------------	---------------------------------------	---------------------------------



CATEGORY	A	B	C	D
LPV DA	4382-1	250 (300-1)		NA
LNAV/VNAV DA	4452-1	320 (400-1)		NA
LNAV MDA	4580-1	448 (500-1)	4580-1 3/8 448 (500-1 3/8)	NA
C CIRCLING	4620-1 482 (500-1)	4640-1 502 (600-1)	4700-1 1/2 562 (600-1 1/2)	NA

SW-1, 20 FEB 2025 to 20 MAR 2025

SW-1, 20 FEB 2025 to 20 MAR 2025