

WAAS CH <b>42644</b> <b>W35A</b>	APP CRS <b>355°</b>	Rwy Idg <b>4000</b> TDZE <b>2631</b> Apt Elev <b>2637</b>
--	------------------------	---

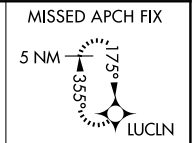
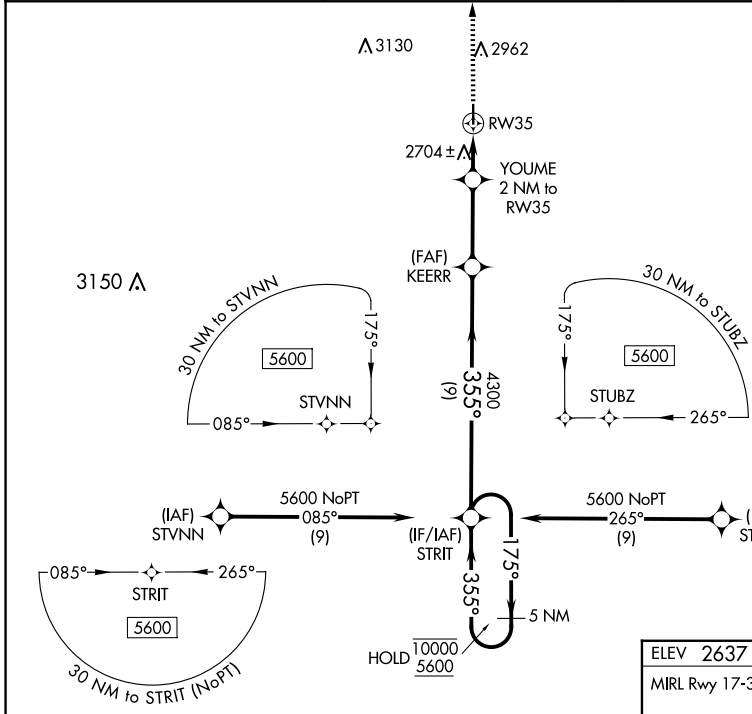
# RNAV (GPS) RWY 35

GOVE COUNTY (1QK)

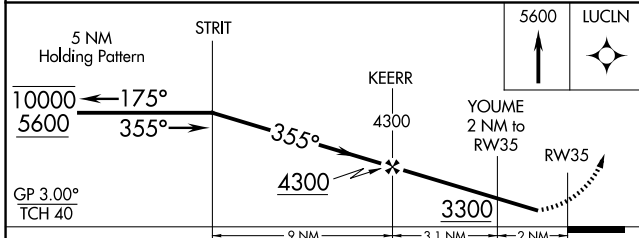
RNP APCH-GPS.  
 ▼ Rwy 35 helicopter visibility reduction below 3/4 SM NA.  
 ▲ NA Baro-VNAV NA. Use Hill City altimeter setting.

MISSED APPROACH: Climb to 5600 direct LUCLN and hold.

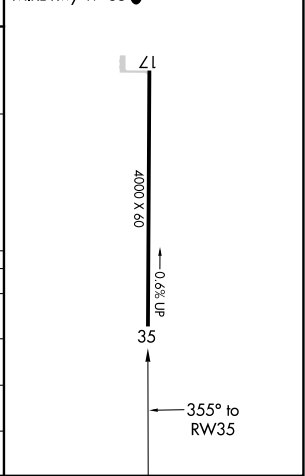
HLC ASOS <b>118.425</b>	DENVER CENTER <b>132.7 226.675</b>	CTAF <b>122.90</b>
----------------------------	---------------------------------------	-----------------------



ELEV 2637	TDZE 2631
MIRL Rwy 17-35	



CATEGORY	A	B	C	D
LPV DA	3001-1	370 (400-1)		NA
LNAV/VNAV DA	3001-1	370 (400-1)		NA
LNAV MDA	3080-1	449 (500-1)		NA
CIRCLING	3340-1 703 (800-1)	3400-1 763 (800-1)		NA



NC-2, 20 FEB 2025 to 20 MAR 2025

NC-2, 20 FEB 2025 to 20 MAR 2025