

COPTER VOR/DME or TACAN 056°

VORTAC LDN 114.3 Chan 90	APCH CRS 056°	Rwy Idg TDZE Arpt Elev 50 1707 1707
--	-------------------------	---

AL-11678 [USN]

BLUEGRASS (9VA5)

▼ Circling not authorized.
Visibility reduction by helicopter NA.

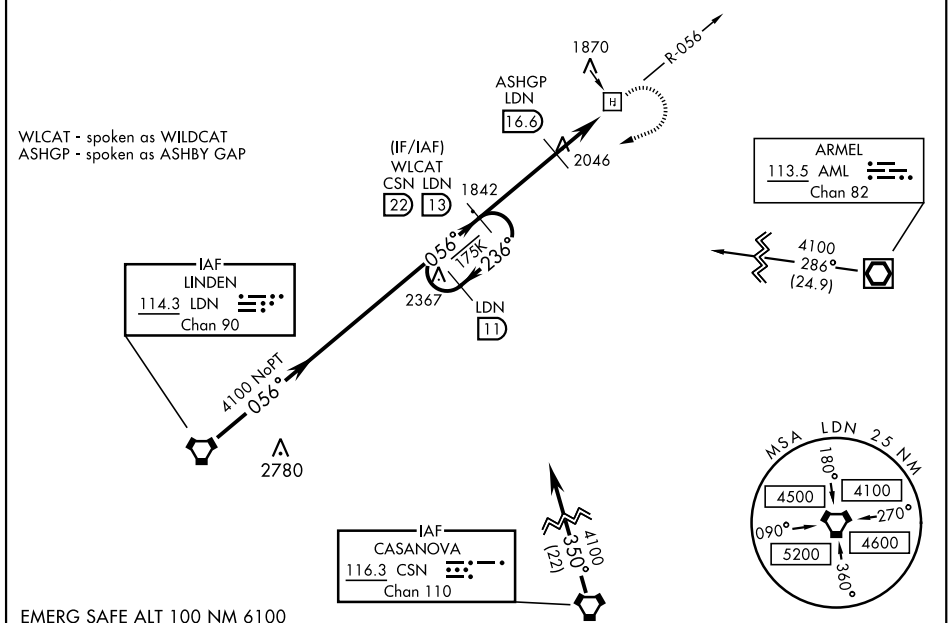
MISSED APPROACH: Climb to 4000, then right turn to intercept LDN VORTAC R-056 to WLCAT and hold.

POTOMAC APP CON 120.45 306.925	BLUEGRASS ADVISORY ★ 126.2 241.0
--	--

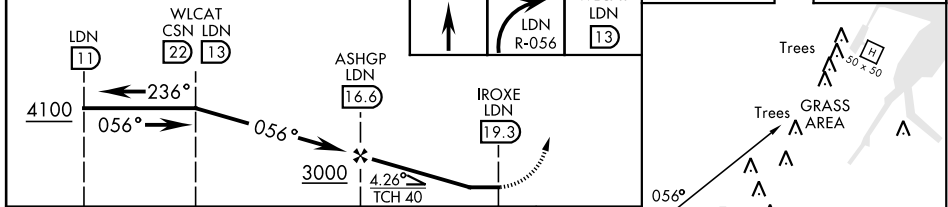
FEMA SPECIAL FACILITY (Bluegrass) normal opr hrs 0745-1630L Mon-Fri.
Phone 540-542-3014 for PPR.

Obtain local altimeter on Bluegrass Advsy, when not rcvd use DULLES Intl altimeter.

RESTRICTED NOT FOR PUBLIC USE



EMERG SAFE ALT 100 NM 6100	ELEV 1707	TDZE 1707
----------------------------	-----------	-----------



CATEGORY	COPTER		
H-056	2440-1	733	(800-1)
DULLES INTL ALTIMETER SETTING			
H-056	2680-1¼	973	(1000-1¼)

COPTER VOR/DME or TACAN 056°

NE-3, 20 FEB 2025 to 20 MAR 2025

NE-3, 20 FEB 2025 to 20 MAR 2025