

(MARVN1.MARVN) 23166

AL-11796 (FAA)

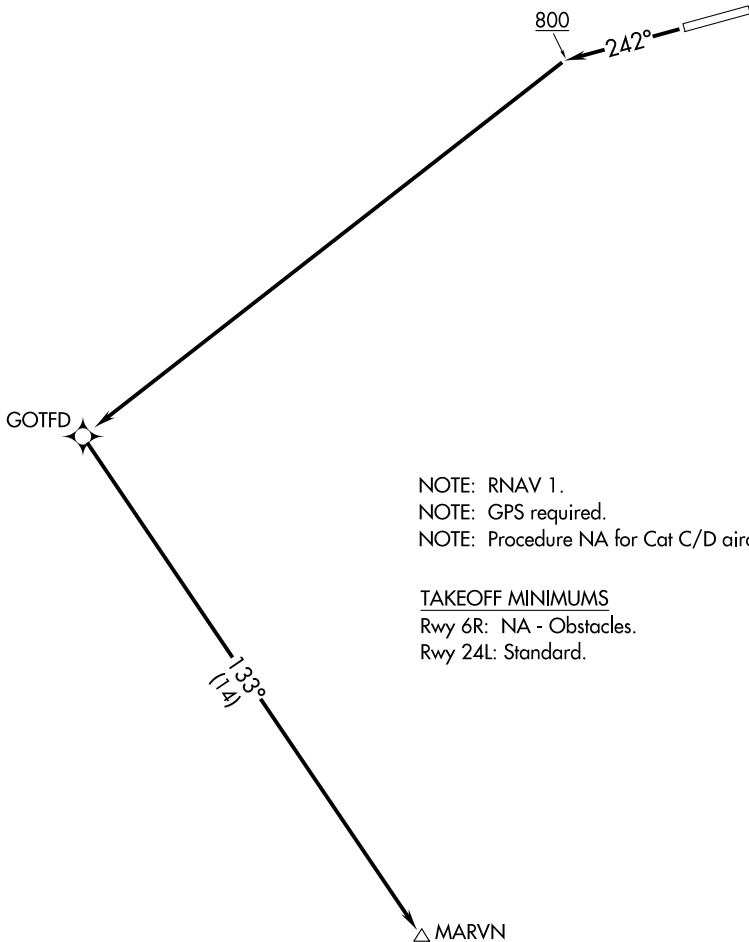
WILDER RUNWAY (Ø5K) (PAKX)

# MARVN ONE DEPARTURE (OBSTACLE) (RNAV)

PORT ALSWORTH, ALASKA

ANCHORAGE CENTER  
118.8 351.8

**TOP ALTITUDE:  
ASSIGNED BY ATC**



NOTE: RNAV 1.  
 NOTE: GPS required.  
 NOTE: Procedure NA for Cat C/D aircraft.

TAKEOFF MINIMUMS  
 Rwy 6R: NA - Obstacles.  
 Rwy 24L: Standard.

### TAKEOFF OBSTACLE NOTES

Rwy 24L: Trees beginning abeam DER, 93' left of centerline, up to 80' AGL/380' MSL.  
 Trees beginning abeam DER, 74' right of centerline, up to 80' AGL/380' MSL.

NOTE: Chart not to scale.

### DEPARTURE ROUTE DESCRIPTION

TAKEOFF RUNWAY 24L: Climb on heading 242° to 800, then climb direct GOTFD, then turn left on track 133° to MARVN. Maintain ATC assigned altitude, expect clearance to filed altitude within 10 minutes after departure.

## MARVN ONE DEPARTURE (OBSTACLE) (RNAV)

(MARVN1.MARVN) 07OCT21

PORT ALSWORTH, ALASKA  
WILDER RUNWAY (Ø5K) (PAKX)

AK, 20 FEB 2025 to 17 APR 2025

AK, 20 FEB 2025 to 17 APR 2025