

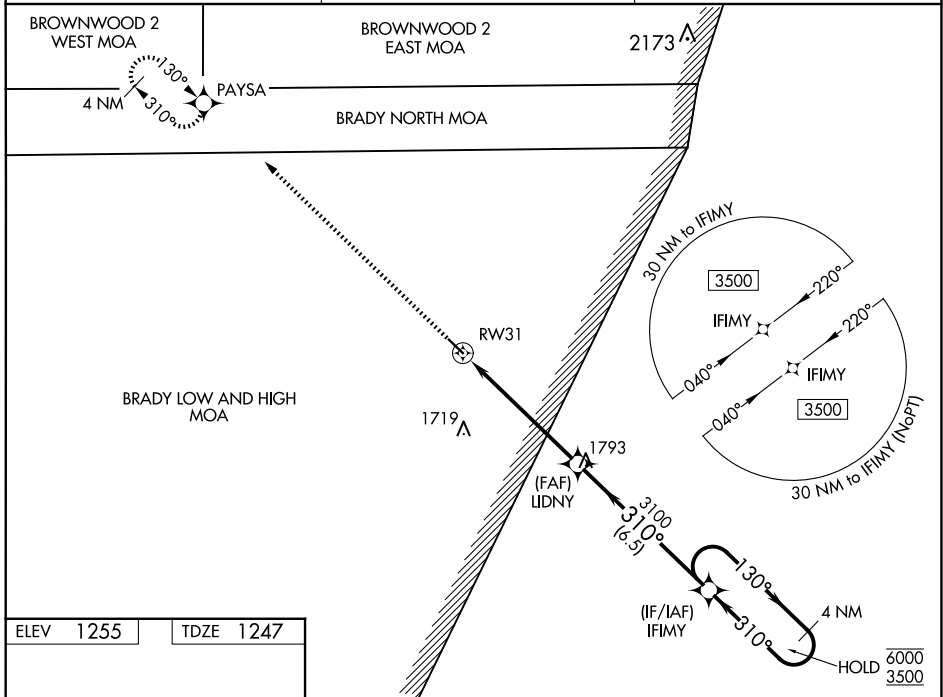
WAAS CH <b>42944</b> <b>W31A</b>	APP CRS <b>310°</b>	Rwy Idg TDZE <b>1247</b> Apt Elev <b>1255</b>	<b>4206</b>
--	------------------------	---	-------------

# RNAV (GPS) RWY 31

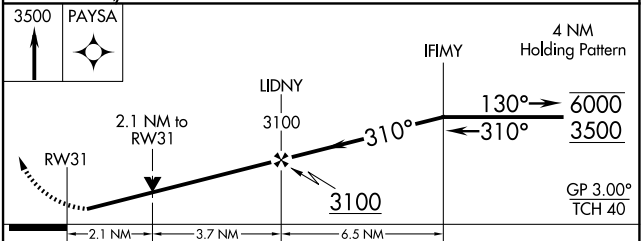
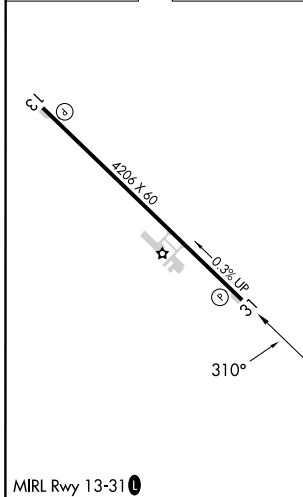
SAN SABA COUNTY MUNI (81R)

RNP APCH - GPS.		MISSED APPROACH: Climb to 3500 direct PAYSA and hold.
<p><b>▼</b> Rwy 31 helicopter visibility reduction below <math>\frac{3}{4}</math> SM NA. For uncompensated Baro-VNAV systems, LNAV/VNAV NA below -17°C or above 54°C.</p>		

AWOS-3P <b>120.525</b>	HOUSTON CENTER <b>132.35 317.5</b>	UNICOM <b>122.8 (CTAF) 0</b>
---------------------------	---------------------------------------	---------------------------------



ELEV 1255	TDZE 1247
-----------	-----------



CATEGORY	A	B	C	D
LPV DA	1497-1	250 (300-1)		NA
LNAV/VNAV DA	1497-1	250 (300-1)		NA
LNAV MDA	1940-1	693 (700-1)		NA
CIRCLING	1940-1	685 (700-1)		NA

SC-3, 20 FEB 2025 to 20 MAR 2025

SC-3, 20 FEB 2025 to 20 MAR 2025