

APP CRS	Rwy Idg	NA
178°	TDZE	NA
	Apt Elev	24

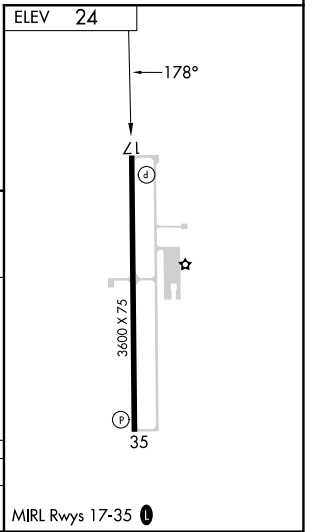
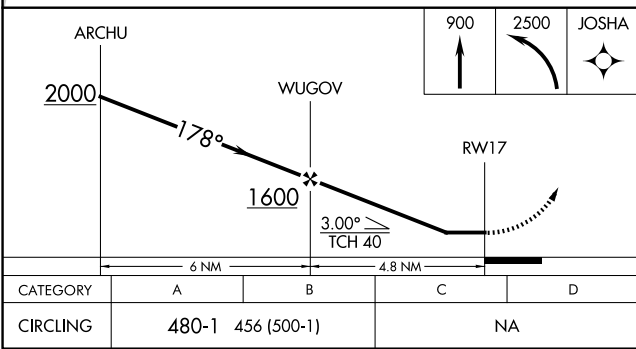
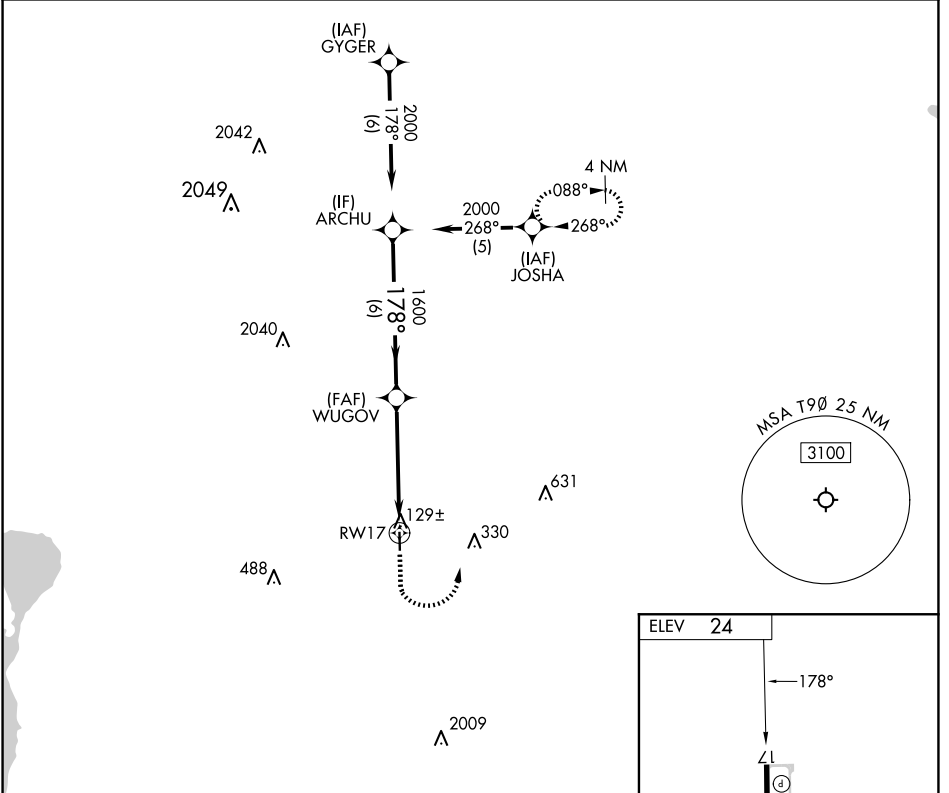
**RNAV (GPS)-A**  
CHAMBERS COUNTY/WINNIE STOWELL (T9 $\emptyset$ )

RNP APCH - GPS.

**NA** Procedure NA at night. Rwy 17 and 35 helicopter visibility reduction below 1 SM NA. Use Beaumont altimeter setting; when not received, use Liberty altimeter setting and increase all MDA's 20 feet.

MISSED APPROACH: Climb to 900 then climbing left turn to 2500 direct JOSHUA and hold.

BMT AWOS-3PT <b>118.425</b>	HOUSTON APP CON <b>121.3 377.1</b>	CTAF <b>122.9 <math>\emptyset</math></b>
--------------------------------	---------------------------------------	---



CATEGORY	A	B	C	D
CIRCLING	480-1	456 (500-1)	NA	

MIRL Rwys 17-35  $\emptyset$

SC-5, 20 FEB 2025 to 20 MAR 2025

SC-5, 20 FEB 2025 to 20 MAR 2025