

WAAS CH 98719 W35A	APP CRS 352°	Rwy Idg TDZE 861 Apt Elev 861
--	------------------------	---

RNAV (GPS) RWY 35

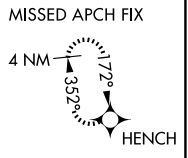
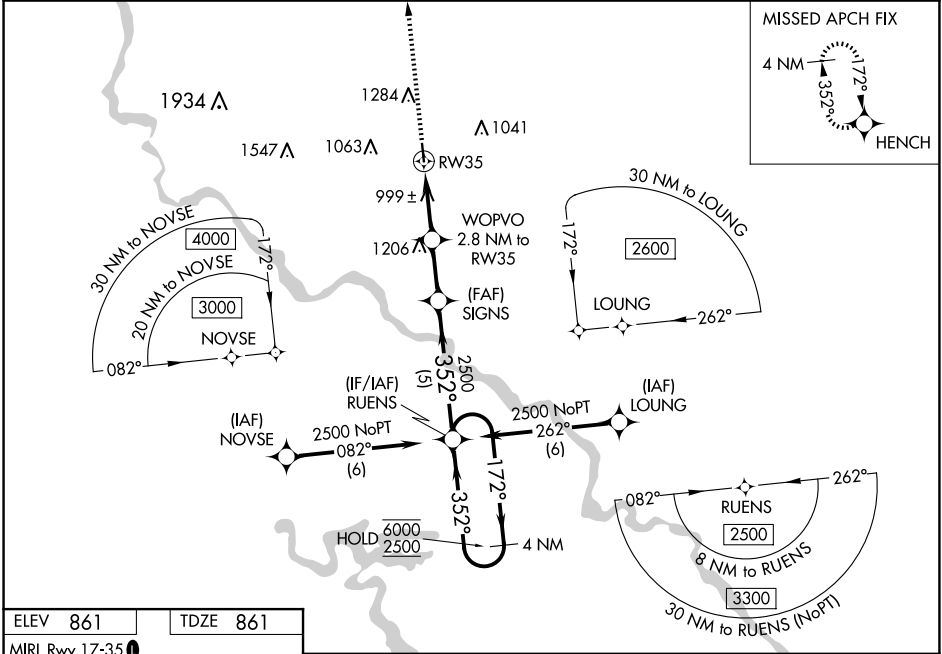
MARION (C17)

RNP APCH - GPS.

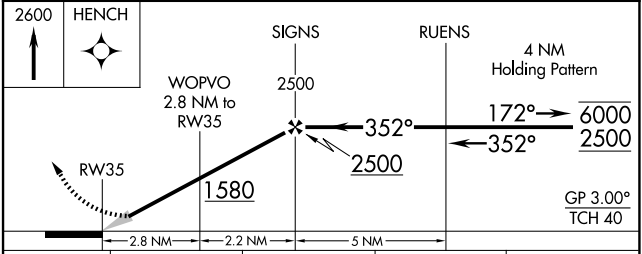
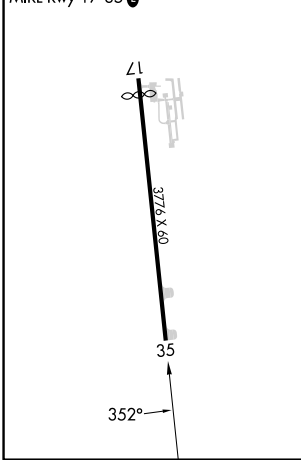
NA Baro-VNAV NA. Circling Rwy 17, NA at night. Circling NA for Cat B west of Rwy 17/35. Use The Eastern Iowa altimeter setting; when not received, use Monticello Rgnl altimeter setting; increase LPV DA to 1133; increase LNAV/VNAV DA to 1162; increase all MDAs 40 feet. For uncompensated Baro-VNAV system, LNAV/VNAV NA below -6°C or above 54°C.

MISSED APPROACH: Climb to 2600 direct HENCH and hold.

CID ASOS 124.15	CEDAR RAPIDS APP CON * 134.05 266.8	UNICOM 122.7 (CTAF) 0
---------------------------	---	---------------------------------



ELEV 861	TDZE 861
----------	----------



CATEGORY	A	B	C	D
LPV DA	1111-1	250 (300-1)		NA
LNAV/VNAV DA	1140-1	279 (300-1)		NA
LNAV MDA	1280-1	419 (500-1)		NA
CIRCLING	1280-1 419 (500-1)	1340-1 479 (500-1)		NA

NC-3, 20 FEB 2025 to 20 MAR 2025

NC-3, 20 FEB 2025 to 20 MAR 2025