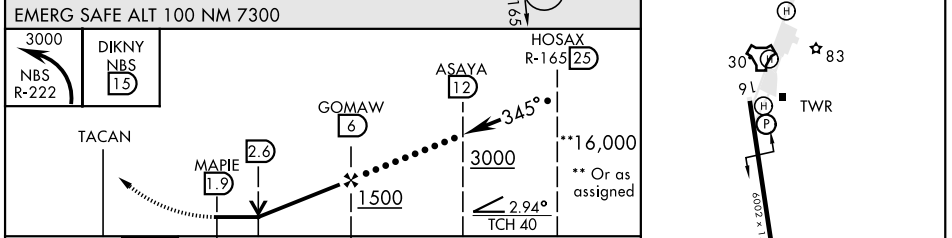
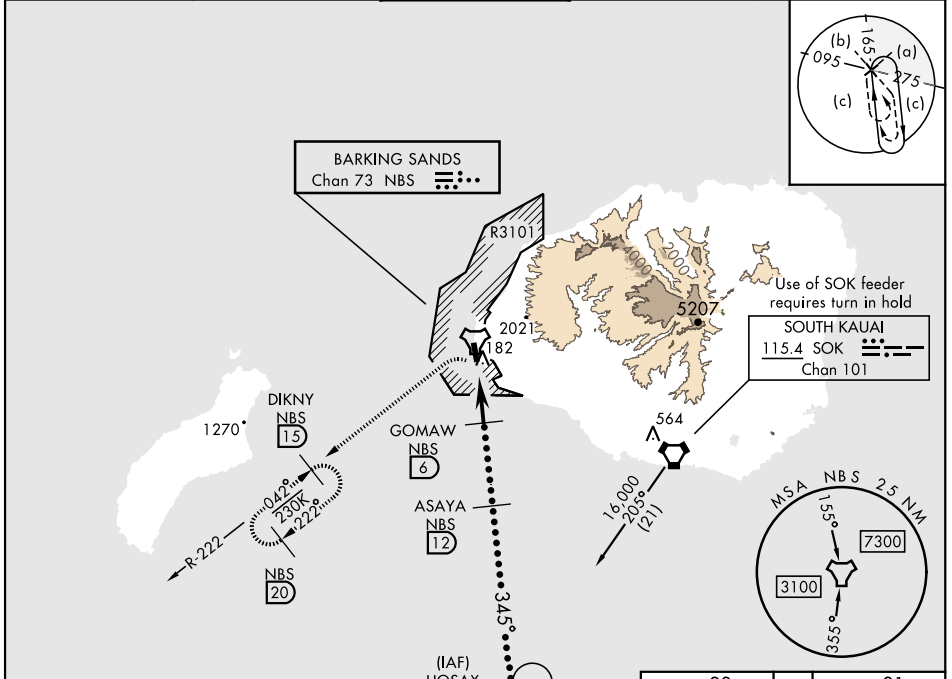


HI-TACAN Z RWY 34

TACAN NBS Chan 73	APCH CRS 345°	Rwy Idg TDZE Arprt Elev 6002 21 23	AL-767 [USN]	BARKING SANDS PMRF (PHBK)
--------------------------	----------------------	---	--------------	---------------------------

* Circling not authorized E of Rwy 16-34. MISSED APPROACH: Climbing left turn to 3000 intercept NBS TACAN R-222 to DIKNY and hold.

ATIS★ 128.0	HCF APP 126.5 269.4	TOWER★ 126.2 360.2	GND CON★ 124.2 340.2	UNICOM 122.8
--------------------	----------------------------	---------------------------	-----------------------------	---------------------



EMERG SAFE ALT 100 NM 7300	3000 NBS R-222	DIKNY NBS 15	TACAN	MAPIE 1.9	GOMAW 6	ASAYA 12	HOSAX R-165 25	3000	**16,000
CATEGORY	C	D	E						
S-34	440-1½	419 (500-1½)							
CIRCLING*	480-1½ 457 (500-1½)	580-2	557 (600-2)						

HI-TACAN Z RWY 34

PAC, 20 FEB 2025 to 17 APR 2025

PAC, 20 FEB 2025 to 17 APR 2025

