

KEKAHA FIVE DEPARTURE (RNAV) (OBSTACLE) (KEKAH5.SOK)

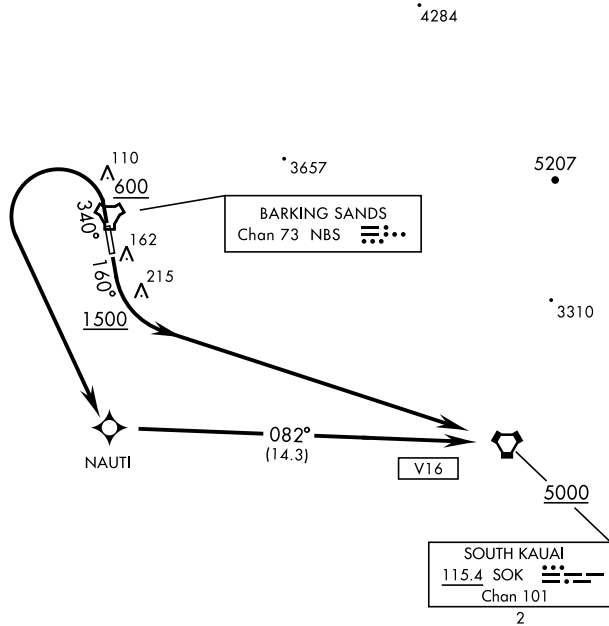
KEKAHA, KAUAI I, HAWAII

BARKING SANDS TOWER ★
 126.2 360.2
 HCF APP
 126.5 269.4

AL-767 [USN]

Rwy	Knots	60	120	180	240	300	360
16	V/V(fpm)	300	600	900	1200	1500	1800
34	V/V(fpm)	260	520	780	1040	1300	1560

ATC Climb Rate to 5000



PAC, 20 FEB 2025 to 17 APR 2025

PAC, 20 FEB 2025 to 17 APR 2025

RNAV1-GPS

DEPARTURE ROUTE DESCRIPTION

TAKEOFF RWY 16: Climb on heading 160° to 1500, thence...

TAKEOFF RWY 34: Climb on heading 340° to 600, then turn left direct NAUTI, thence...

...turn direct SOK VORTAC. Cross SOK at or above 5000.