

KEKAHA, KAUAI I, HAWAII

RNAV (GPS) RWY 34

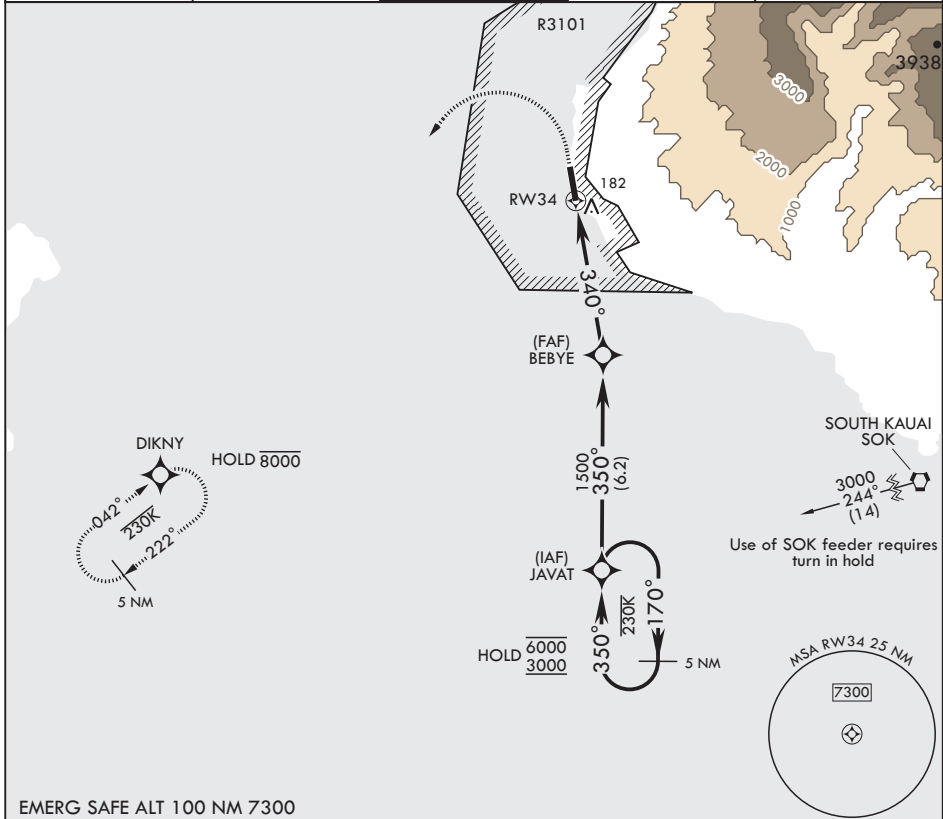
APCH CRS 340°	Rwy Idg TDZE Arprt Elev	6002 21 23
-------------------------	-------------------------------	---------------------------------------

AL-767 (USN)

BARKING SANDS PMRF (PHBK)

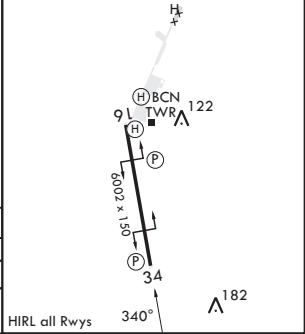
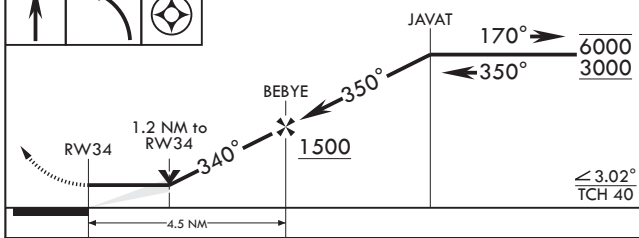
RNP APCH	MISSED APPROACH: Climb to 550 then climbing left turn to 3000 direct DIKNY and hold.
<p>⚠ * Circling not authorized E of Rwy 16-34.</p>	

ATIS* 128.0	HCF CENTER 126.5 269.4	TOWER* 126.2 360.2	GND CON* 124.2 340.2	UNICOM 122.8
-----------------------	----------------------------------	------------------------------	--------------------------------	------------------------



EMERG SAFE ALT 100 NM 7300

550	3000	DIKNY	ELEV 23	TDZE 21
-----	------	-------	---------	---------



CATEGORY	A	B	C	D
LNAV MDA	440-1 419 (500-1)	480-1 457 (500-1)	440-1½ 457 (500-1½)	419 (500-1½) 580-2 557 (600-2)
CIRCLING*	440-1 417 (500-1)	480-1 457 (500-1)	480-1½ 457 (500-1½)	580-2 557 (600-2)

HIRL all Rwys

KEKAHA, KAUAI I, HAWAII

22°01'N - 159°47'W

BARKING SANDS PMRF (PHBK)

Amdt 5 14JUL22

RNAV (GPS) RWY 34

PAC, 20 FEB 2025 to 17 APR 2025

PAC, 20 FEB 2025 to 17 APR 2025