

COPTER TACAN RWY 22

TACAN NGF Chan 93	APCH CRS 192°	Rwy Idg TDZE 7771 Arprt Elev 23
--------------------------	----------------------	--

[USN]

KANEHOE BAY MCAS (PHNG)

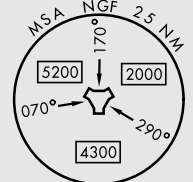
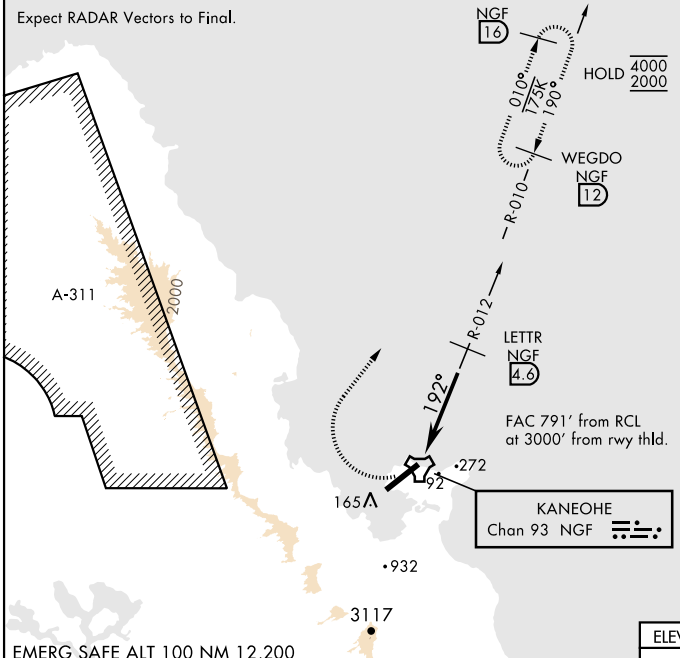
RADAR required	
* Circling not authorized SE of Rwy 04-22. Visibility reduction not authorized.	
ATIS 284.5	APP/DEP CON 125.0 263.5

TOWER 120.7(CTAF) 360.2	GND CON 382.8	CLNC DEL 294.7	ASR/PAR
--------------------------------	----------------------	-----------------------	---------

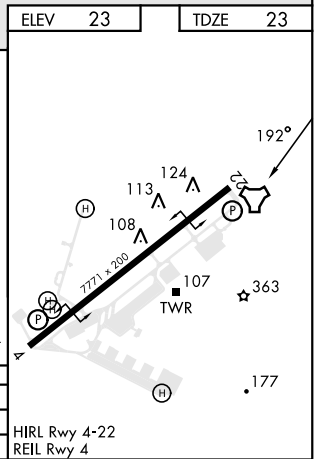
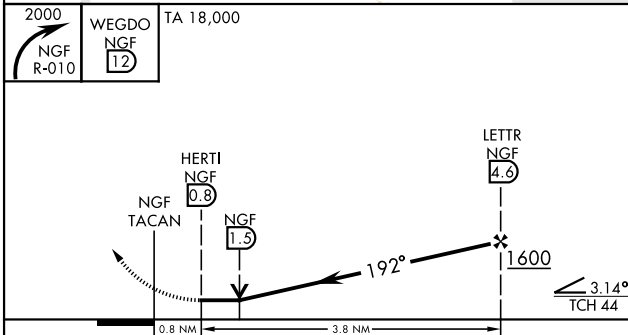
CAUTION: Mountainous terrain E, S, and W of airfield.

Max procedure airspeed 90 KIAS.

Expect RADAR Vectors to Final.



EMERG SAFE ALT 100 NM 12,200



CATEGORY	COPTER		
H-22	540-1	517	(600-1)
CIRCLING*	540-1	517	(600-1)

HIRL Rwy 4-22
REIL Rwy 4

COPTER TACAN RWY 22

PAC, 20 FEB 2025 to 17 APR 2025

PAC, 20 FEB 2025 to 17 APR 2025