

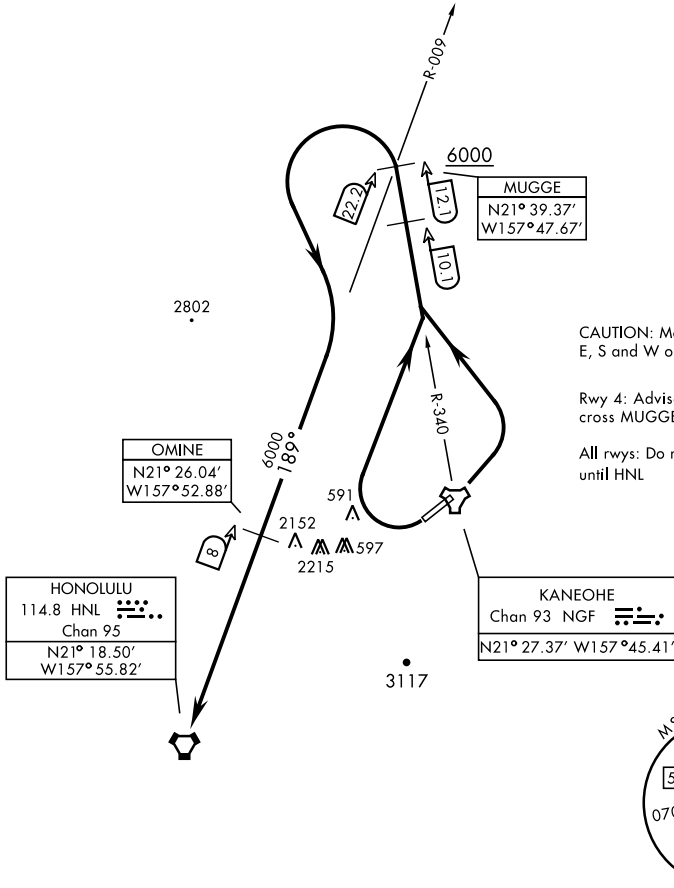
MUGGE ONE DEPARTURE (OBSTACLE) (MUGGE1•HNL)

MOKAPU POINT, OAHU I, HAWAII

Rwy	Knots	60	120	180	240	300	360
22	V/V(fpm)	975	1950	2925	4900	4875	5850

Minimum Climb Rate to 4500

ATIS 284.5  
 CLNC DEL 294.7  
 GND CON 382.8  
 KANEOHE TOWER 120.7 (CTAF) 360.2  
 KANEOHE APP/DEP CON 125.0 263.5



CAUTION: Mountainous terrain E, S and W of airfield.

Rwy 4: Advise ATC if unable to cross MUGGE at or above 6000

All rwys: Do not exceed 250 KIAS until HNL

PAC, 20 FEB 2025 to 17 APR 2025

PAC, 20 FEB 2025 to 17 APR 2025

TA 18,000

DEPARTURE ROUTE DESCRIPTION

TAKEOFF RWY 4: Turn left to intercept NGF TACAN R-340 to MUGGE, then intercept HNL VORTAC R-009 to HNL. Cross MUGGE at or above 6000.

TAKEOFF RWY 22: Turn right as soon as practicable to intercept NGF TACAN R-340 to MUGGE, then intercept HNL VORTAC R-009 to HNL.