

APP CRS	Rwy Idg	<b>5086</b>
<b>175°</b>	TDZE	<b>3176</b>
	Apt Elev	<b>3176</b>

# RNAV (GPS) RWY 17

LUBBOCK EXEC AIRPARK (F82)

RNP APCH - GPS.

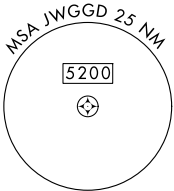
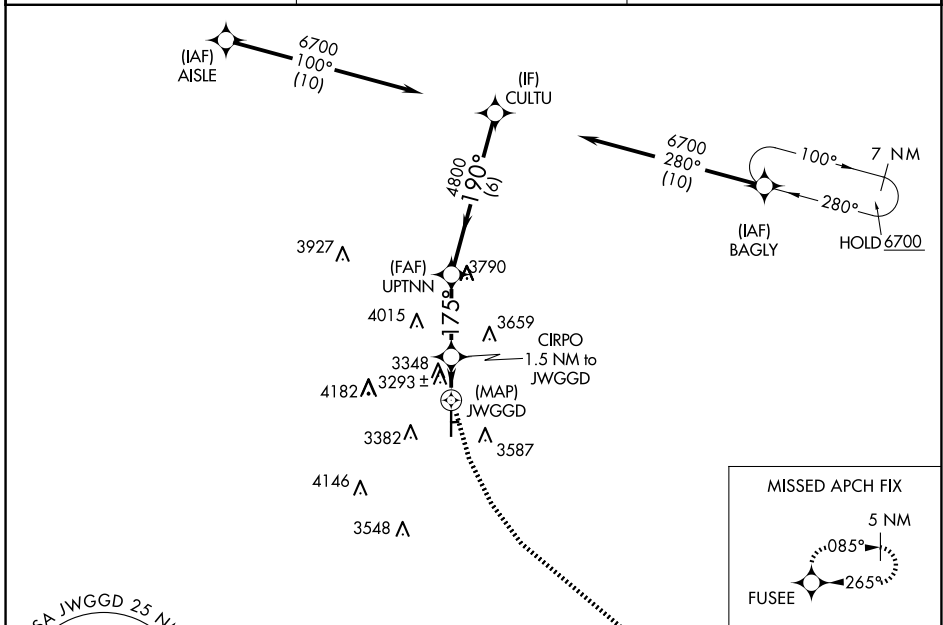
- Use LBB altimeter setting.
- NA Rwy 17 helicopter visibility reduction below 1 SM NA. Circling NA east of Rwy 17-35.

MISSED APPROACH: Climbing left turn to 5000 direct FUSEE and hold.

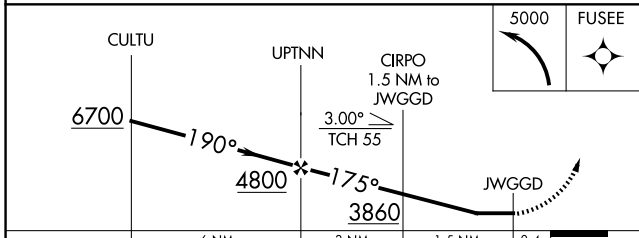
LBB ASOS	125.3 270.275
----------	---------------

LUBBOCK APP CON	119.2 351.8
-----------------	-------------

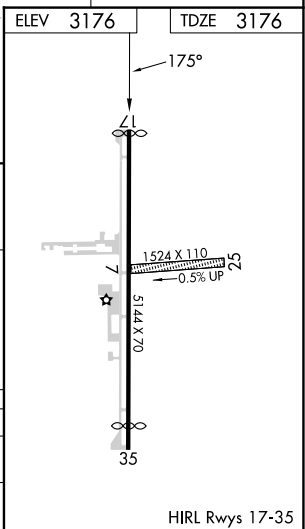
UNICOM	122.8 (CTAF)
--------	--------------



ELEV	3176	TDZE	3176
------	------	------	------



CATEGORY	A	B	C	D
LNVA MDA	3640-1	464 (500-1)	3640-1 $\frac{3}{8}$ 464 (500-1 $\frac{3}{8}$ )	NA
CIRCLING	3700-1 524 (600-1)	3740-1 564 (600-1)	4580-3 1404 (1500-3)	NA



SC-2, 20 FEB 2025 to 20 MAR 2025

SC-2, 20 FEB 2025 to 20 MAR 2025