

# HI-ILS or LOC RWY 8

LOC I-SPT <b>111.9</b>	APCH CRS <b>079°</b>	Rwy ldg <b>12,793</b> TDZE <b>5320</b> Arprt Elev <b>5355</b>	[USAF] ALBUQUERQUE INTL SUNPORT (KIRTLAND AFB) (KABQ)
---------------------------	-------------------------	---	---

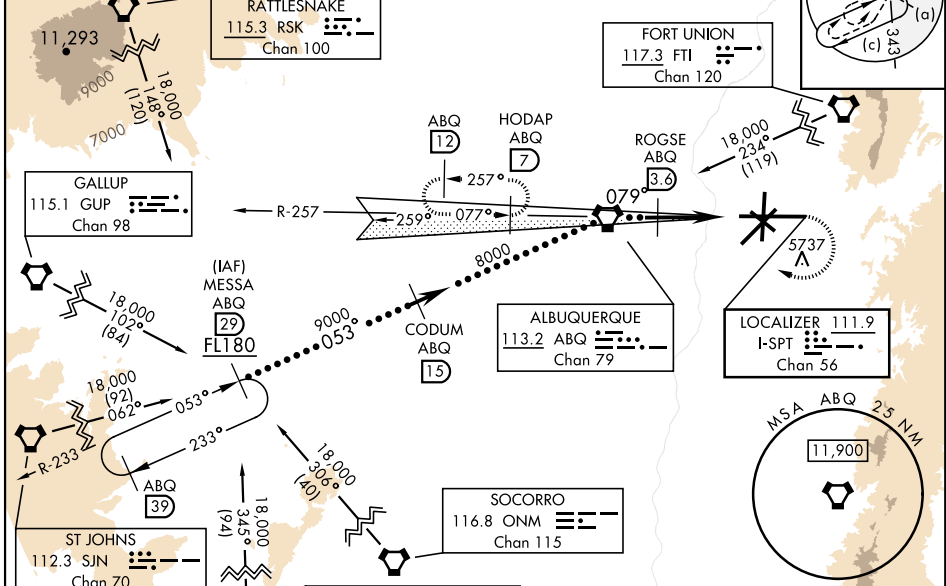
DME required  
 \* When ALS inop, increase RVR to 40 and vis to 3/4 mile.  
 \*\* When ALS inop, increase RVR to 60 and vis to 1 1/2 miles.



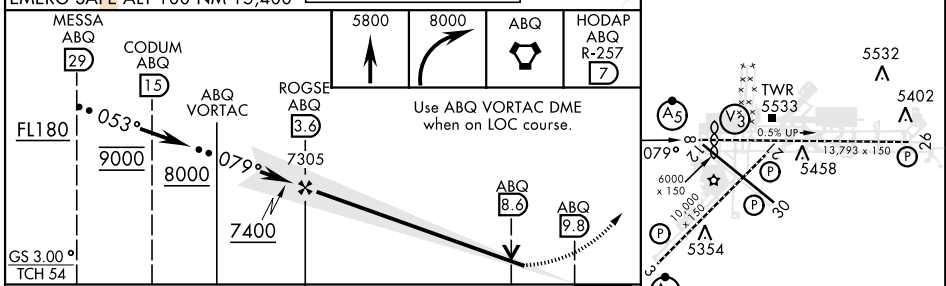
MISSED APPROACH: Climb to 5800 then climbing right turn to 8000 direct ABQ VORTAC and ABQ R-257 to HODAP/ABQ 7 DME and hold.

ATIS <b>118.0 257.7</b>	APP CON <b>123.9 354.1</b>	TOWER <b>120.3 351.9</b>	GND CON <b>121.9 348.6</b>	CLNC DEL <b>119.2 259.3</b>	ASR
----------------------------	-------------------------------	-----------------------------	-------------------------------	--------------------------------	-----

\*\*\* Circling not authorized CAT E SE of Rwy 3-21 and NE of Rwy 12-30.  
 CAUTION: 5389' obst 750' left of rwy centerline abeam Rwy 8 thld. Mountains rising to 10,000' 7 NM E of field.



EMERG SAFE ALT 100 NM 15,400	ELEV 5355	TDZE 5320
------------------------------	-----------	-----------



CATEGORY	C	D	E
S-ILS 8*	5529/24	209 (300-1/2)	
S-LOC 8**	5740/40	420 (500-3/4)	
*** CIRCLING	5920-1 1/2 (600-1 1/2)	6460-3	1105 (1200-3)

Rwy 8 ldg 12,793'

Obstacle chart details:

- Obstacles: 5532, 5402, 5458, 5354, 5533, 6000 x 150, 10,000 x 150, 13,793 x 150
- Distances: 0.5 NM UP, 0.5 NM

HIRL Rwy 3-21 and 8-26  
 MIRL Rwy 12-30  
 REIL Rwy 21, 26, and 30  
 TDZL/CL Rwy 3 and 8

FAF to MAP 6.1 NM					
Knots	120	140	160	180	200
Min:Sec	3:03	2:37	2:17	2:02	1:50

# HI-ILS or LOC RWY 8

SW-1, 20 MAR 2025 to 17 APR 2025

SW-1, 20 MAR 2025 to 17 APR 2025