

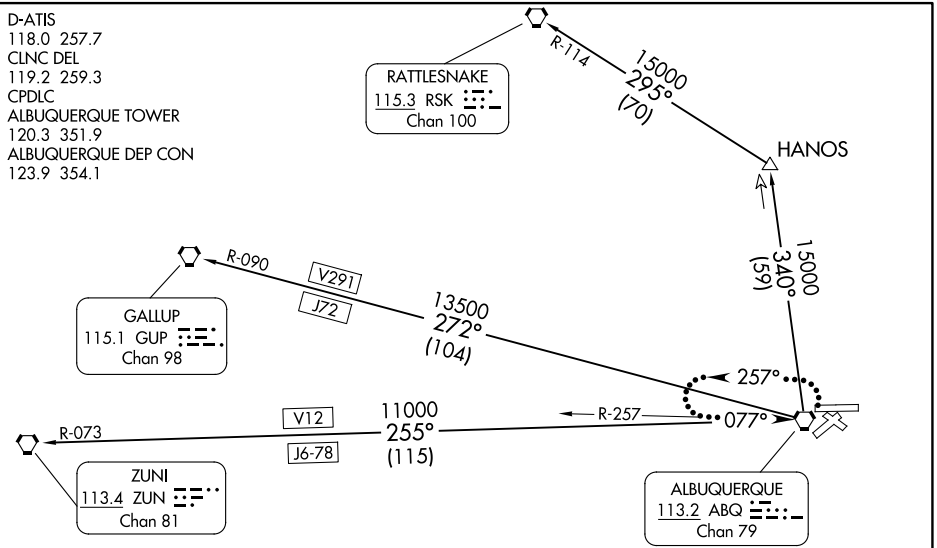
(LARGO3.ABQ) 23334

LARGO THREE DEPARTURE

ALBUQUERQUE INTL SUNPORT (ABQ)

ALBUQUERQUE, NEW MEXICO

D-ATIS
 118.0 257.7
 CLNC DEL
 119.2 259.3
 CPDLC
 ALBUQUERQUE TOWER
 120.3 351.9
 ALBUQUERQUE DEP CON
 123.9 354.1



TAKEOFF MINIMUMS

Rwys 3, 12, 21, 26, 30: Standard

Rwy 8: Standard with a minimum climb of 470' per NM to 7600.

NOTE: Departing Rwy 8, do not exceed 240K until established on assigned heading.

NOTE: RADAR required.

NOTE: DME required for RATTLESNAKE TRANSITION.

NOTE: Caution: Mountainous terrain all quadrants.

NOTE: Caution: Hang glider activity in vicinity of mountains.

NOTE: Chart not to scale.

DEPARTURE ROUTE DESCRIPTION

All aircraft climb on assigned heading for RADAR vectors to filed/assigned route. Expect clearance to filed altitude/flight level 5 minutes after departure.

LOST COMMUNICATIONS

If no transmissions are received for 1 minute after departure and a climb to 14000 feet or higher has not been issued, proceed direct ABQ VORTAC, climb in holding pattern to 14000, then proceed via assigned fix/route. If cleared above 14000 feet, climb on assigned heading to 14000 feet, then proceed via assigned route.

GALLUP TRANSITION (LARGO3.GUP): From over ABQ VORTAC on ABQ R-272 and GUP R-090 to GUP VORTAC.

RATTLESNAKE TRANSITION (LARGO3.RSK): From over ABQ VORTAC on ABQ R-340 to HANOS, then on RSK R-114 to RSK VORTAC.

ZUNI TRANSITION (LARGO3.ZUN): From over ABQ VORTAC on ABQ R-255 and ZUN R-073 to ZUN VORTAC.

LARGO THREE DEPARTURE
(LARGO3.ABQ) 12OCT17

ALBUQUERQUE, NEW MEXICO
ALBUQUERQUE INTL SUNPORT (ABQ)

SW-1, 20 MAR 2025 to 17 APR 2025

SW-1, 20 MAR 2025 to 17 APR 2025