

LOC I-BXY 111.9	APP CRS 135°	Rwy Idg TDZE Apt Elev	5800 386 394
---------------------------	------------------------	-----------------------------	---

ILS or LOC RWY 13

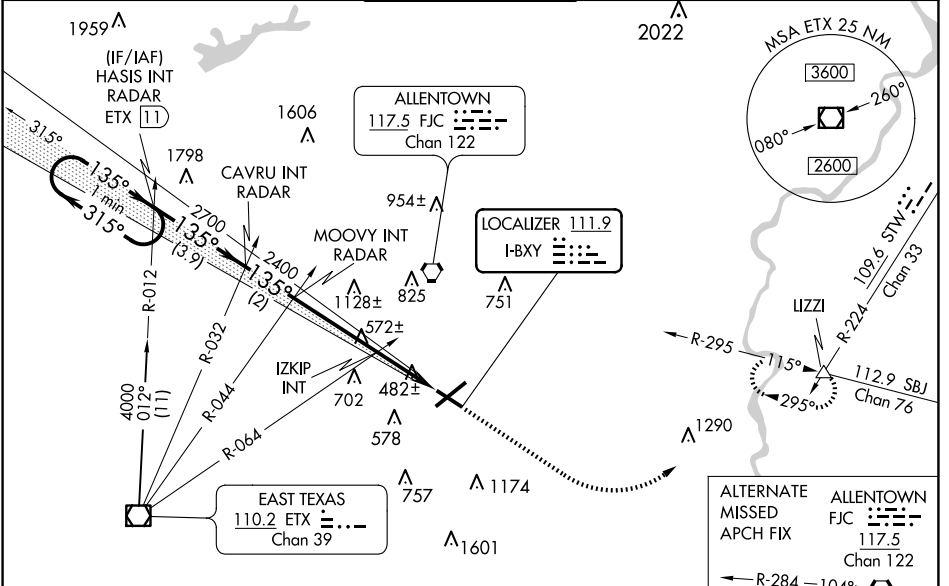
LEHIGH VALLEY INTL (ABE)

⚠ For inoperative MALSR, increase IZKIP fix minimums S-LOC 13 Cat C/D visibility to 1 mile.

MALSR

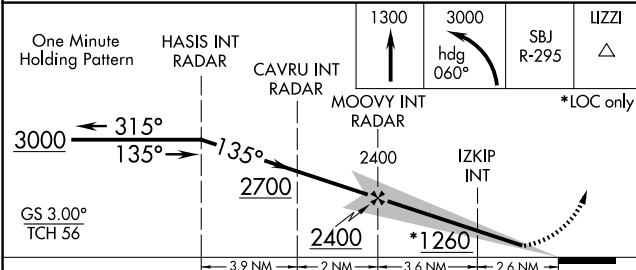
MISSED APPROACH: Climb to 3000 then climbing left turn to 3000 on heading 060° and on SBJ VOR/DME R-295 to IZZI INT and hold.

ATIS 126.975	ALLENTOWN APP CON 119.65 124.45 351.8	ALLENTOWN TOWER 120.5 257.95	GND CON 121.9 257.95	CLNC DEL 124.05 257.95
------------------------	---	--	--------------------------------	----------------------------------

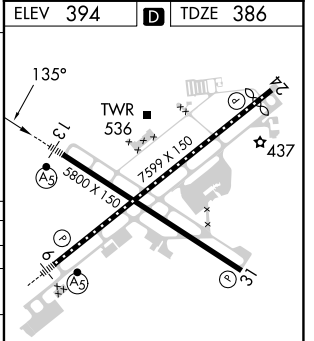


NE-4, 20 MAR 2025 to 17 APR 2025

NE-4, 20 MAR 2025 to 17 APR 2025



ELEV 394	D	TDZE 386
----------	----------	----------



CATEGORY	A	B	C	D
S-ILS 13	586- $\frac{1}{2}$ 200 (200- $\frac{1}{2}$)			
S-LOC 13	1260- $\frac{1}{2}$ 874 (900- $\frac{1}{2}$)	1260- $\frac{3}{4}$ 874 (900- $\frac{3}{4}$)	1260-2 874 (900-2)	
C CIRCLING	1260-1 $\frac{1}{4}$	866 (900-1 $\frac{1}{4}$)	1260-2 $\frac{1}{2}$ 866 (900-2 $\frac{1}{2}$)	1600-3 1206 (1300-3)
IZKIP FIX MINIMUMS (DUAL VOR RECEIVERS REQUIRED)				
S-LOC 13	740- $\frac{1}{2}$	354 (400- $\frac{1}{2}$)	740- $\frac{5}{8}$	354 (400- $\frac{5}{8}$)
C CIRCLING	840-1 446 (500-1)	900-1 506 (600-1)	1180-2 $\frac{1}{4}$ 786 (800-2 $\frac{1}{4}$)	1600-3 1206 (1300-3)

REIL Rwy 24 and 31	
HIRL Rwy 6-24 and 13-31	
FAF to MAP 6.2 NM	
Knots	60 90 120 150 180
Min:Sec	6:12 4:08 3:06 2:29 2:04