

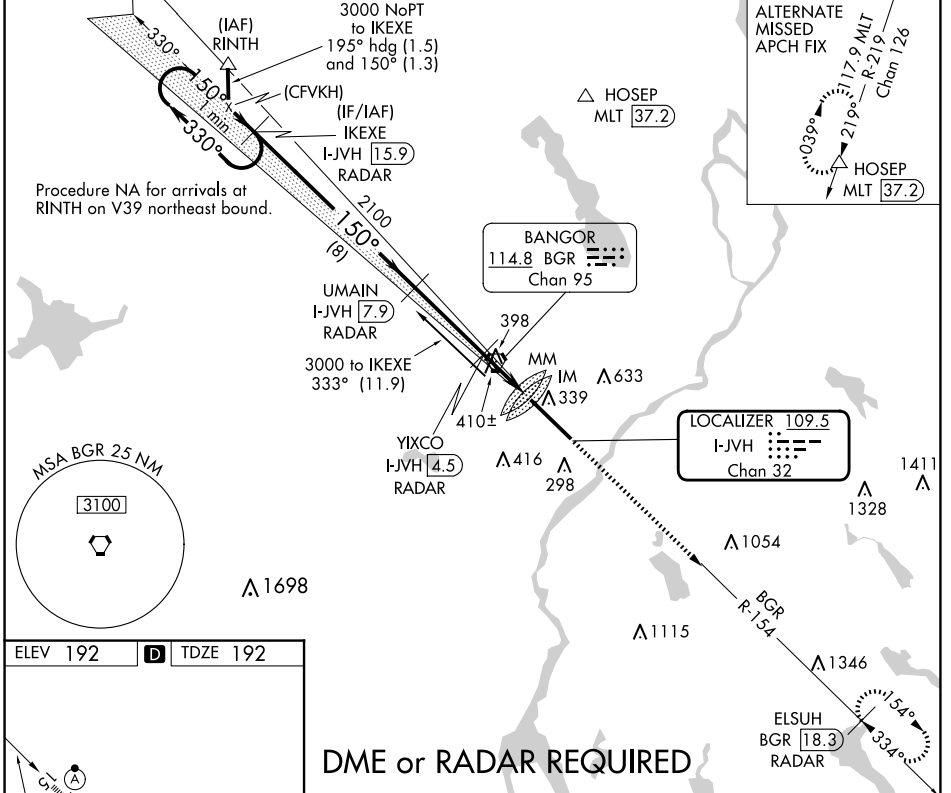
LOC/DME I-JVH	APP CRS	Rwy Idg	11440
109.5	150°	TDZE	192
Chan 32		Apt Elev	192

ILS Y or LOC Y RWY 15

BANGOR INTL (BGR)

<p>ASR</p>	<p>Circling NA NE of Rwy 15-33. DME or RADAR required. For inoperative ALS, increase S-ILS 15 Cat E visibility to RVR 4000, and S-LOC 15 Cat C/D/E visibility to 1/2 SM.</p>	<p>ALSIF-2</p>	<p>MISSED APPROACH: Climb to 3000 on heading 150° and BGR VORTAC R-154 to ELSUH/BGR 18.3 DME/RADAR and hold.</p>

ATIS	BANGOR APP CON	BANGOR TOWER	GND CON	CLNC DEL
127.75	118.925 239.3	120.7 233.7	121.9 348.6	135.9 348.6



ELEV 192	D	TDZE 192
----------	----------	----------

TDZ/CL Rwy 15
HIRL Rwy 15-33

FAF to MAP 5.8 NM

Knots	60	90	120	150	180
Min:Sec	5:48	3:52	2:54	2:19	1:56

DME or RADAR REQUIRED

One Minute Holding Pattern	IKEXE I-JVH [15.9] RADAR	UMAIN I-JVH [7.9] RADAR	3000 hdg 150°	BGR R-154	ELSUH BGR [18.3] RADAR
----------------------------	--------------------------	-------------------------	---------------	-----------	------------------------

3000 ← 330° → 150° → 150° → 2100

GS 3.00° TCH 50
VGS1 and ILS glidepath not coincident (VGS1 Angle 3.00/TCH 55).

*1000

YIXCO I-JVH [4.5] RADAR

I-JVH [3.3]

I-JVH [2.1]

*LOC only.

CATEGORY	A	B	C	D	E
S-ILS 15	392/18 200 (200-1/2)				
S-LOC 15	660/24	468 (500-1/2)	660/50	468 (500-1)	
<input checked="" type="checkbox"/> CIRCLING	660-1 468 (500-1)	720-1 528 (600-1)	740-1 1/2 548 (600-1 1/2)	820-2 628 (700-2)	880-2 1/2 688 (700-2 1/2)

NE-1, 20 MAR 2025 to 17 APR 2025

NE-1, 20 MAR 2025 to 17 APR 2025