

LOC/DME I-BTR 110.3 Chan 40	APP CRS 133°	Rwy Idg 5720 TDZE 67 Apt Elev 70
---	------------------------	---

ILS or LOC RWY 13

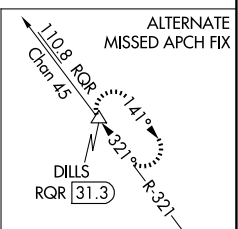
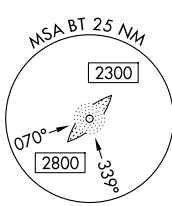
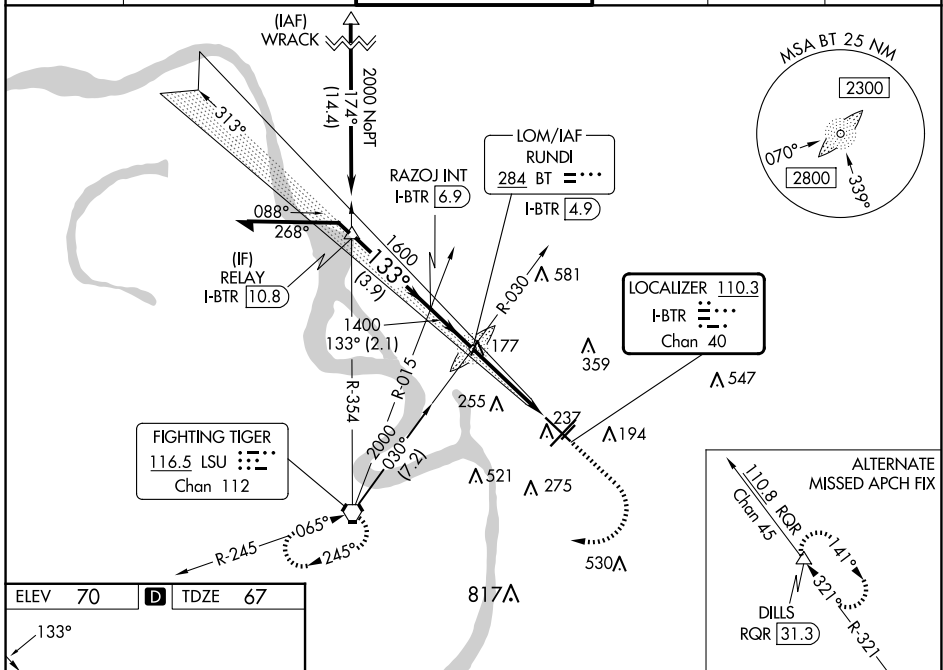
BATON ROUGE METRO, RYAN FLD (BTR)

⚠ For inop MALS/R when using Hammond altimeter setting, increase S-ILS 13 all Cats visibility to $\frac{3}{8}$ mile, and S-LOC 13 visibility to $\frac{1}{8}$ mile. VDP NA with Hammond altimeter setting. When local altimeter setting not received, use Hammond altimeter setting and increase all DA 91 feet and all MDA 100 feet, increase S-LOC 13 Cats C and D visibility $\frac{1}{4}$ mile, increase Circling Cats C and D visibility $\frac{1}{4}$ mile. For inop MALS/R, increase S-LOC 13 Cats C and D to $\frac{1}{8}$ mile.

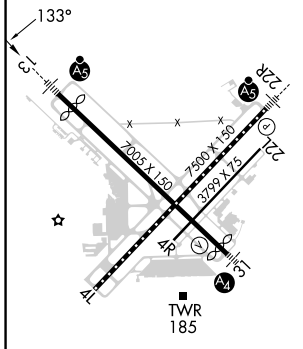


MISSED APPROACH:
Climb to 700 then climbing right then to 2000 direct LSU VORTAC and hold.

ATIS 125.2	BATON ROUGE APP CON * 120.3 278.3	RYAN TOWER * 118.45 (CTAF) 257.8	GND CON 121.9	CLNC DEL 119.4	UNICOM 122.95
----------------------	---	--	-------------------------	--------------------------	-------------------------



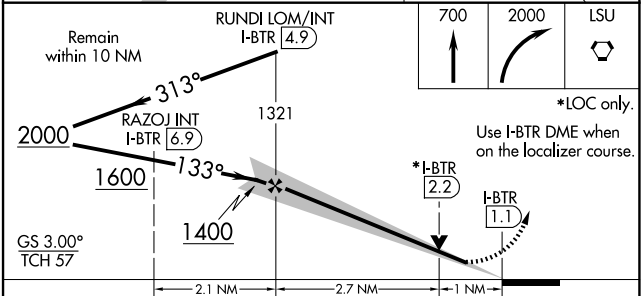
ELEV 70	D	TDZE 67
---------	----------	---------



TDZ/CL Rwy 22R
HIRL Rwy 13-31 and 4L-22R
MIRL Rwy 4R-22L

FAF to MAP 3.7 NM

Knots	60	90	120	150	180
Min:Sec	3:42	2:28	1:51	1:29	1:14



CATEGORY	A	B	C	D
S-ILS 13		267- $\frac{1}{2}$	200 (200- $\frac{1}{2}$)	
S-LOC 13	480- $\frac{1}{2}$	413 (500- $\frac{1}{2}$)	480- $\frac{3}{4}$	413 (500- $\frac{3}{4}$)
C CIRCLING	560-1 490 (500-1)	660-1 590 (600-1)	780-2 710 (800-2)	840-2 $\frac{1}{2}$ 770 (800-2 $\frac{1}{2}$)

SC-4, 20 MAR 2025 to 17 APR 2025

SC-4, 20 MAR 2025 to 17 APR 2025