

| | | |
|--|------------------------|---|
| WAAS CH 86225 W22A | APP CRS 224° | Rwy Idg 7500 TDZE 70 Apt Elev 70 |
|--|------------------------|---|

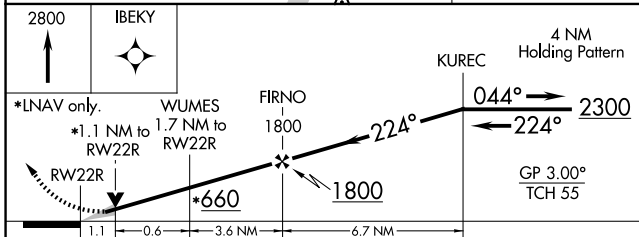
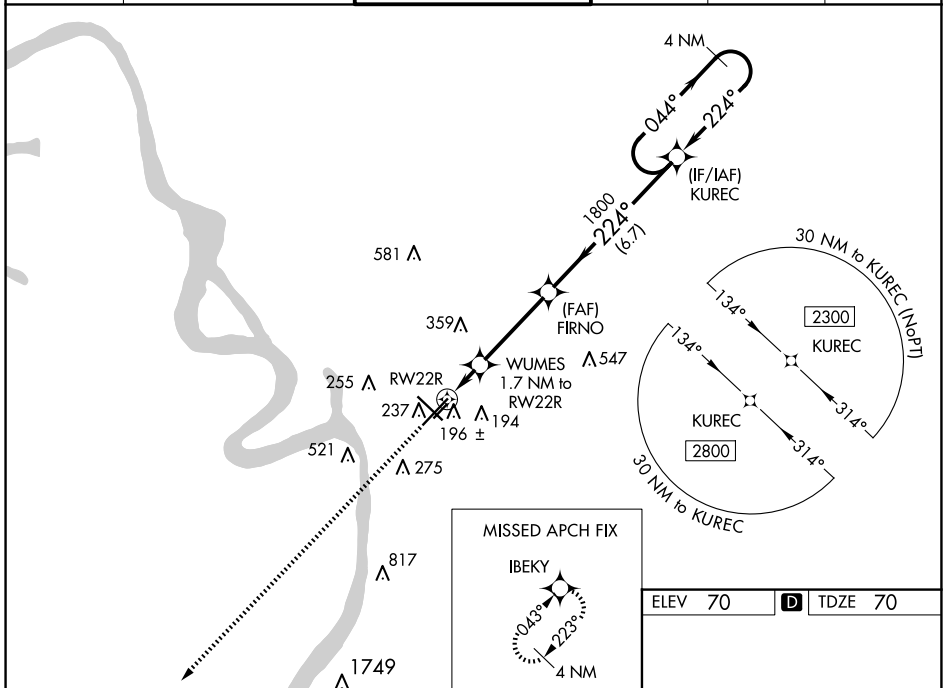
RNAV (GPS) RWY 22R

BATON ROUGE METRO, RYAN FLD (BTR)

⚠ Baro-VNAV NA when using Hammond altimeter setting. For uncompensated Baro-VNAV systems, LNAV/VNAV NA below -5°C (23°F) or above 54°C (130°F). DME/DME RNP-0.3 NA. VDP NA with Hammond altimeter setting. When local altimeter setting not received, use Hammond altimeter setting and increase all DA 91 feet, and all MDA 100 feet; increase LNAV/VNAV all Cats visibility 3/8 mile, LNAV Cat C/D visibility to RVR 5000, and Circling Cat C/D visibility 1/4 mile. For inop MALS/R when using Hammond altimeter setting, increase LPV all Cats visibility to RVR 4500, and LNAV C/D visibility to 1 3/8 mile.

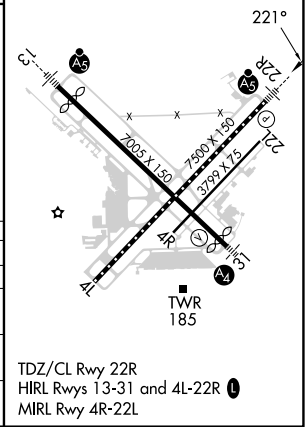
MALS/R
A5
MISSED APPROACH:
Climb to 2800 direct
IBEKY and hold.

| | | | | | |
|----------------------|--|---|-------------------------|--------------------------|-------------------------|
| ATIS 125.2 | BATON ROUGE APP CON* 120.3 278.3 | RYAN TOWER* 118.45 (CTAF) 0 257.8 | GND CON 121.9 | CLNC DEL 119.4 | UNICOM 122.95 |
|----------------------|--|---|-------------------------|--------------------------|-------------------------|



| | |
|---------|------------------|
| ELEV 70 | D TDZE 70 |
|---------|------------------|

| CATEGORY | A | B | C | D |
|-------------------|----------------------|----------------------|----------------------|------------------------------|
| LPV DA | | 270/18 | 200 (200-1/2) | |
| LNAV/VNAV DA | | 486/45 | 416 (500-7/8) | |
| LNAV MDA | 460/24 | 390 (400-1/2) | 460/35 | 390 (400-3/8) |
| C CIRCLING | 560-1 490 (500-1) | 660-1 590 (600-1) | 780-2 710 (800-2) | 840-2 1/2 770 (800-2 1/2) |



SC-4, 20 MAR 2025 to 17 APR 2025

SC-4, 20 MAR 2025 to 17 APR 2025