

WAAS CH <b>81825</b> <b>W04A</b>	APP CRS <b>043°</b>	Rwy Idg <b>7500</b> TDZE <b>69</b> Apt Elev <b>70</b>
--	------------------------	---

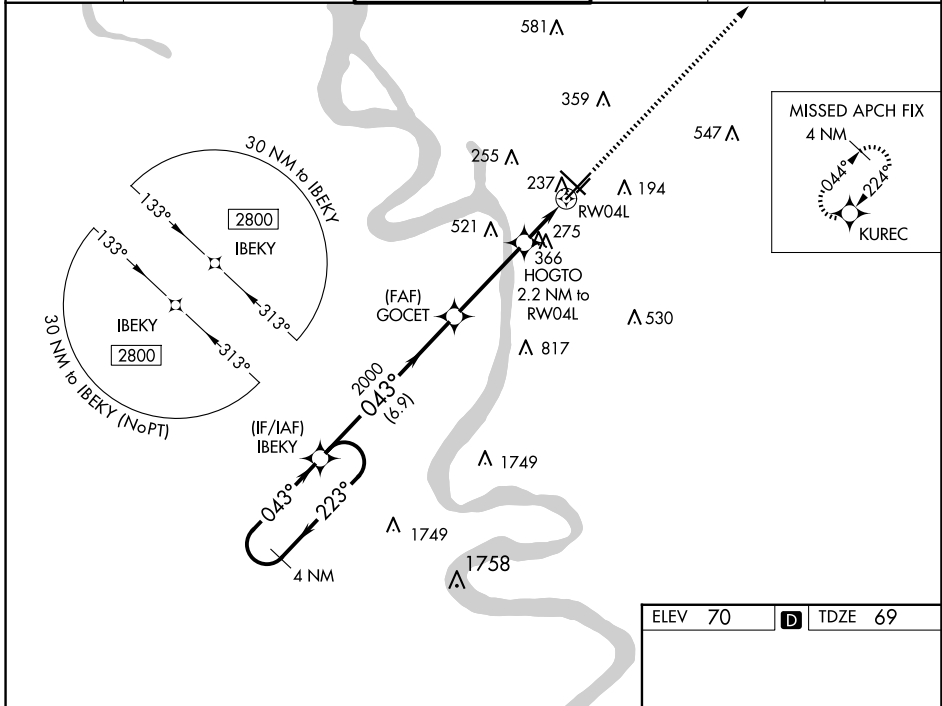
# RNAV (GPS) RWY 4L

BATON ROUGE METRO, RYAN FLD (BTR)

**⚠** For uncompensated Baro-VNAV systems, LNAV/VNAV NA below -5°C (23°F) or above 54°C (130°F).  
**⚠** DME/DME RNP-0.3 NA. Baro-VNAV and VDP NA when using Hammond altimeter setting. When local altimeter setting not received, use Hammond altimeter setting and increase all DA 91 feet and all MDA 100 feet; increase LPV visibility ¼ mile all Cats, LNAV/VNAV visibility ½ mile all Cats and LNAV Cat C/D visibility ¼ mile, Circling Cat C/D visibility ¼ mile. Helicopter visibility reduction below ¾ SM NA.

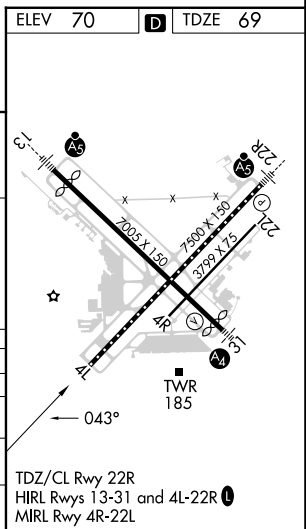
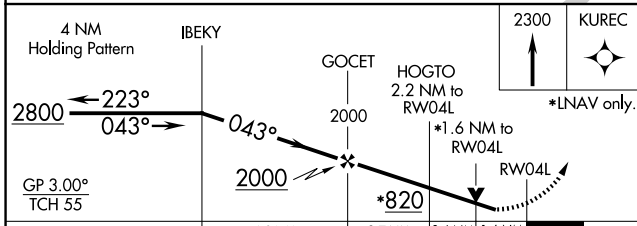
**MISSED APPROACH:**  
Climb to 2300 direct KUREC and hold.

ATIS <b>125.2</b>	BATON ROUGE APP CON* <b>120.3 278.3</b>	RYAN TOWER* <b>118.45 (CTAF) 257.8</b>	GND CON <b>121.9</b>	CLNC DEL <b>119.4</b>	UNICOM <b>122.95</b>
----------------------	--	---	-------------------------	--------------------------	-------------------------



SC-4, 20 MAR 2025 to 17 APR 2025

SC-4, 20 MAR 2025 to 17 APR 2025



ELEV 70		D TDZE 69	
CATEGORY	A	B	C
LPV DA	345-7/8		276 (300-7/8)
LNAV/VNAV DA	656-2		587 (600-2)
LNAV MDA	620-1	551 (600-1)	620-15/8 551 (600-15/8)
CIRCLING	620-1 550 (600-1)	660-1 590 (600-1)	780-2 710 (800-2)      840-2 1/2 770 (800-2 1/2)

TDZ/CL Rwy 22R  
HIRL Rwys 13-31 and 4L-22R  
MIRL Rwy 4R-22L