

KIENO SIX DEPARTURE

AL-45 (FAA)

BELLINGHAM INTL (BLI)
BELLINGHAM, WASHINGTON

**TOP ALTITUDE:
ASSIGNED BY ATC**

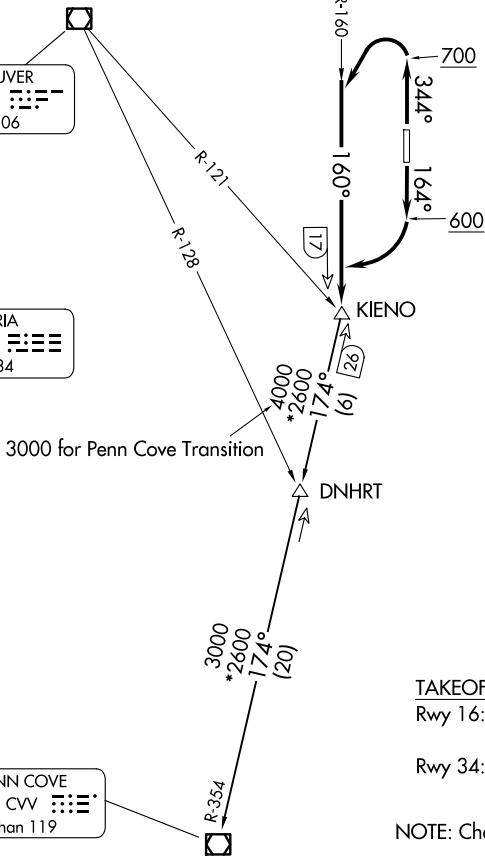
VANCOUVER
115.9 YVR
Chan 106

VICTORIA
113.7 YYJ
Chan 84

PENN COVE
117.2 CVV
Chan 119

WHATCOM
113.0 HUH
Chan 77

VICTORIA TERMINAL DEP CON
132.7 290.8
ATIS
134.45
GND CON
127.4 379.3
BELLINGHAM TOWER*
124.9 379.3



TAKEOFF MINIMUMS

Rwy 16: Standard with a minimum climb of 280' per NM to 2500.

Rwy 34: Standard.

NOTE: Chart not usable for TACAN aircraft.

NOTE: Chart not to scale.

DEPARTURE ROUTE DESCRIPTION

TAKEOFF RUNWAY 16: Climb on heading 164° to 600, then climbing right turn to intercept HUH R-160 to KIENO, thence. . . .

TAKEOFF RUNWAY 34: Climb on heading 344° to 700, then climbing left turn to intercept HUH R-160 to KIENO, thence. . . .

. . . maintain ATC assigned altitude, expect requested altitude within 10 minutes.

DNHRT TRANSITION (KIENO6.DNHRT): From over KIENO on CVV R-354 to DNHRT.

PENN COVE TRANSITION (KIENO6.CVV): From over KIENO on CVV R-354 to CVV VOR/DME.

KIENO SIX DEPARTURE