

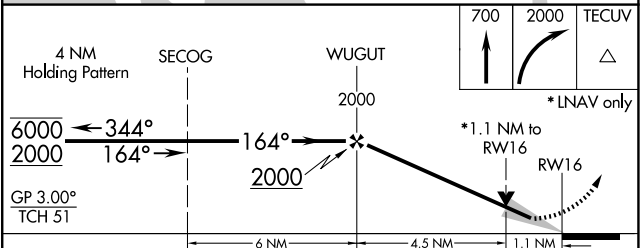
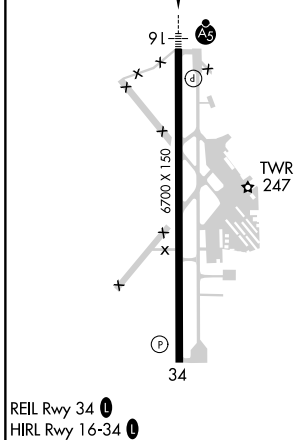
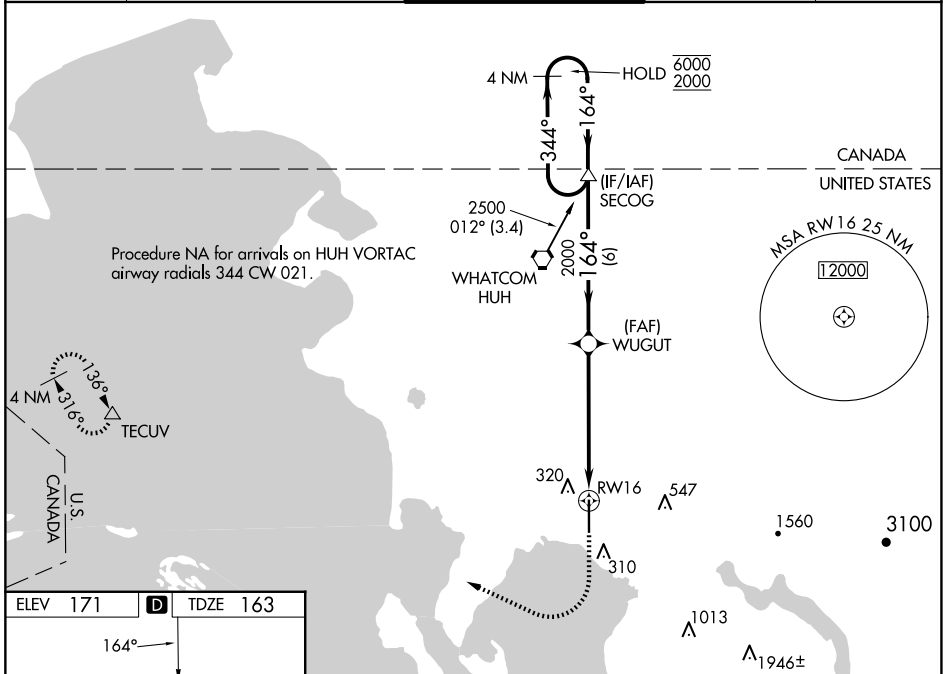
WAAS CH 45999 W16A	APP CRS 164°	Rwy Idg TDZE 163 Apt Elev 171
--	------------------------	---

RNAV (GPS) Y RWY 16

BELLINGHAM INTL (BLI)

RNP APCH. A For uncompensated Baro-VNAV systems, LNAV/VNAV NA below -10°C or above 54°C. #RVR 1800 authorized with use of FD or AP or HUD to DA.	MALS R 	MISSED APPROACH: Climb to 700 then climbing right turn to 2000 direct TECUV and hold.
---	------------	--

ATIS 134.45	VICTORIA TERMINAL APP CON 132.7 290.8	BELLINGHAM TOWER ★ 124.9 (CTAF) 0 379.3	GND CON 127.4 379.3	UNICOM 122.95
-----------------------	---	---	-------------------------------	-------------------------



GP 3.00° TCH 51	6 NM	4.5 NM	1.1 NM
4 NM Holding Pattern	SECOG	WUGUT	TECUV
6000 2000	← 344°	→ 164°	↑ 700 ↘ 2000 △ TECUV
2000	← 164°	→ 2000	*INAV only
			*1.1 NM to RWY 16
			RWY 16
CATEGORY	A	B	C
LPV DA #		363/24	200 (200-½)
LNAV/VNAV DA		491/30	328 (400-¾)
LNAV MDA	560/24	397 (400-½)	560/35 397 (400-¾)
CIRCLING	640-1	469 (500-1)	900-2 1160-3 729 (800-2) 989 (1000-3)

NW-1, 20 MAR 2025 to 17 APR 2025

NW-1, 20 MAR 2025 to 17 APR 2025