

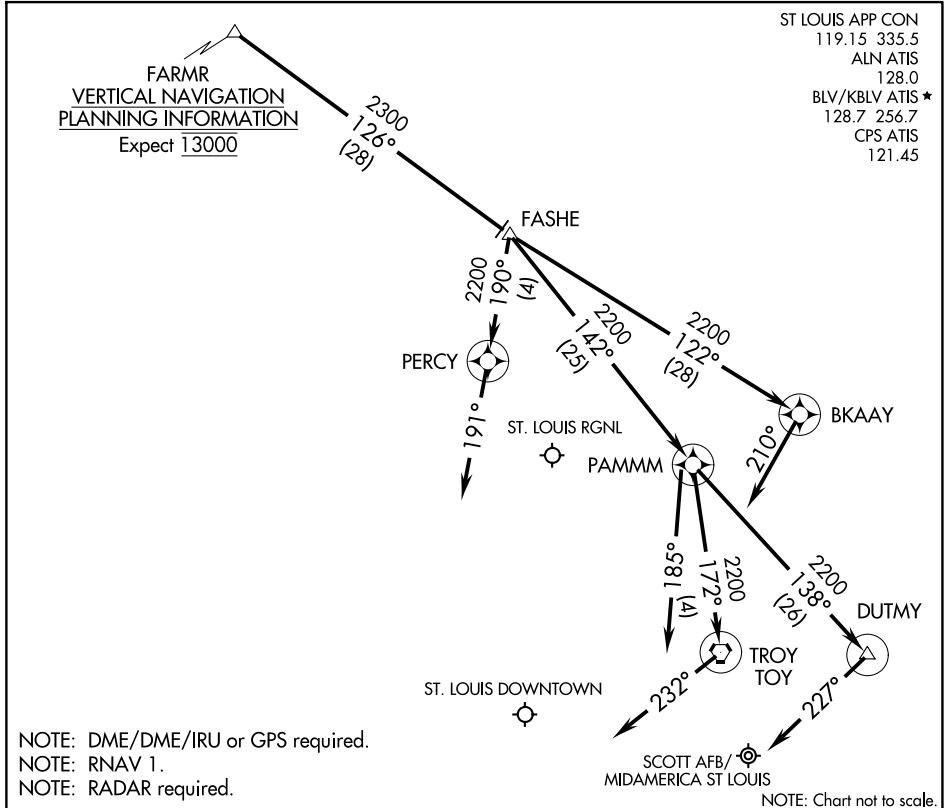
FARMR THREE ARRIVAL (RNAV)

AL-46 (FAA)

BELLEVILLE, ILLINOIS

FARMR
VERTICAL NAVIGATION
PLANNING INFORMATION
Expect 13000

ST LOUIS APP CON
119.15 335.5
ALN ATIS
128.0
BLV/KBLV ATIS ★
128.7 256.7
CPS ATIS
121.45



NOTE: DME/DME/IRU or GPS required.
NOTE: RNAV 1.
NOTE: RADAR required.

NOTE: Chart not to scale.

ARRIVAL DESCRIPTION

ST. LOUIS DOWNTOWN:

LANDING RWY 12R, 30L/R: From FARMR on track 126° to FASHE, then on track 142° to PAMMM. Expect radar vector prior to PAMMM. If no heading received, track 185°.

SCOTT AFB/MIDAMERICA ST LOUIS:

LANDING RWYS 14L/R: From FARMR on track 126° to FASHE, then on track 142° to PAMMM, then on track 172° to TOY VORTAC. Expect RADAR vector prior to TOY VORTAC. If no heading received, track 232°.

LANDING RWYS 32L/R: From FARMR on track 126° to FASHE, then on track 142° to PAMMM, then on track 138° to DUTMY. Expect radar vector prior to DUTMY. If no heading received, track 227°.

ST. LOUIS RGNL:

LANDING RWY 11: From FARMR on track 126° to FASHE, then on track 190° to PERCY. Expect radar vector prior to PERCY. If no heading received, track 191°.

LANDING RWY 29: From FARMR on track 126° to FASHE, then on track 122° to BKAAY. Expect radar vector prior to BKAAY. If no heading received, track 210°.

FARMR THREE ARRIVAL (RNAV)

BELLEVILLE, ILLINOIS