

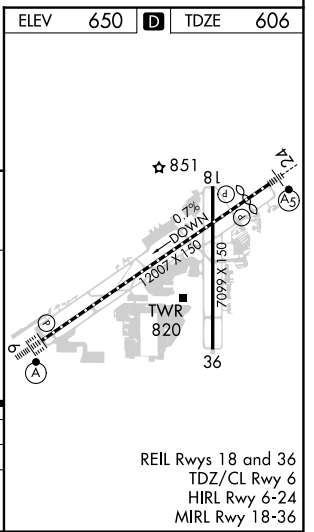
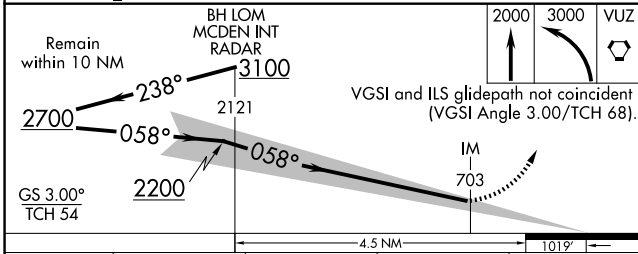
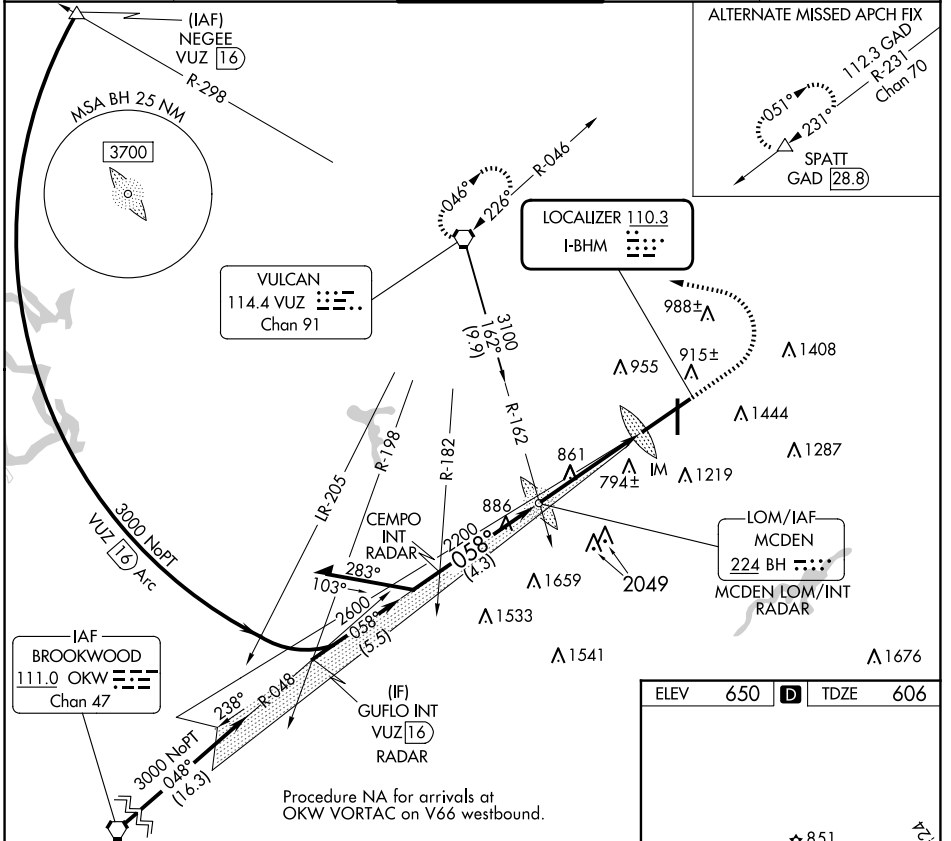
LOC I-BHM 110.3	APP CRS 058°	Rwy ldg 12007
		TDZE 606
		Apt Elev 650

ILS RWY 6 (CAT II)

BIRMINGHAM-SHUTTLESWORTH INTL (BHM)

RNP APCH-GPS. From OKW VORTAC. ALSF-2
MISSED APPROACH: Climb to 2000 then climbing left turn to 3000 direct VUZ VORTAC and hold.

ATIS 119.4 270.1	BIRMINGHAM APP CON 123.8 256.8	BIRMINGHAM TOWER 119.9 317.725	GND CON 121.7 348.6	CLNC DEL 125.675 305.2
----------------------------	------------------------------------------	------------------------------------------	-------------------------------	----------------------------------



CATEGORY	A	B	C	D
S-ILS 6		RA 118/12	100 DA 706	
CATEGORY II ILS - SPECIAL AIRCREW & AIRCRAFT CERTIFICATION REQUIRED				

ILS RWY 6 (CAT II)

REIL Rwy 18 and 36
TDZ/CL Rwy 6
HIRL Rwy 6-24
MIRL Rwy 18-36

SE-4, 20 MAR 2025 to 17 APR 2025

SE-4, 20 MAR 2025 to 17 APR 2025