

APP CRS	Rwy Idg	8994
303°	TDZE	4462
	Apt Elev	4473

RNAV (RNP) Z RWY 30

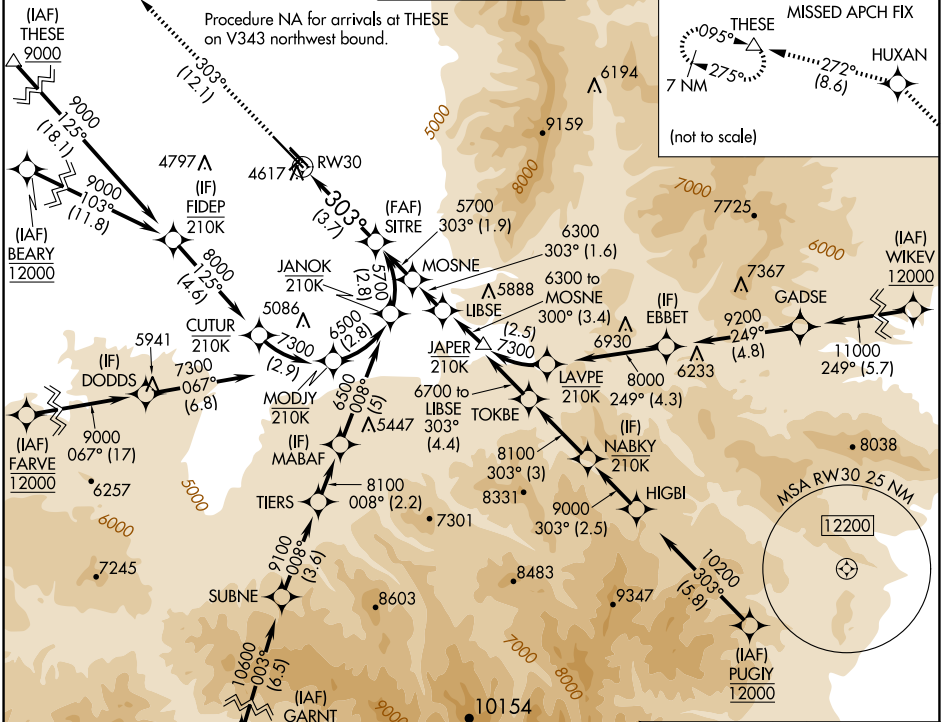
BOZEMAN YELLOWSTONE INTL (BZN)

RNP AR APCH - GPS.

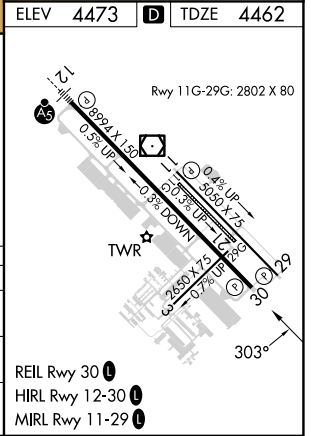
For uncompensated Baro-VNAV systems, procedure NA below -27°C or above 54°C. When local altimeter setting not received, procedure NA.

MISSED APPROACH: Climb to 10000 on track 303° to HUXAN and on track 272° to THESE and hold, continue climb-in-hold to 10000.

ATIS 135.425	BIG SKY APP CON ★ 118.975 226.675	BOZEMAN TOWER ★ 118.2 (CTAF) 0	GND CON 121.8	UNICOM 122.95
------------------------	---	--	-------------------------	-------------------------



ELEV	4473	TDZE	4462
10000	HUXAN	THESE	SITRE
↑	★	△	5700
tr 303°	tr 272°		
See planview for multiple IF locations.			
RW30		303°	
GP 3.00°		TCH 45	
CATEGORY	A	B	C
RNP 0.11 DA		4806-1	344 (400-1)
RNP 0.30 DA		4885-1¼	423 (500-1¼)
AUTHORIZATION REQUIRED			



NW-1, 20 MAR 2025 to 17 APR 2025

NW-1, 20 MAR 2025 to 17 APR 2025