

APP CRS	Rwy Idg	<b>8994</b>
<b>318°</b>	TDZE	<b>4462</b>
	Apt Elev	<b>4473</b>

# RNAV (GPS) Y RWY 30

BOZEMAN YELLOWSTONE INTL (BZN)

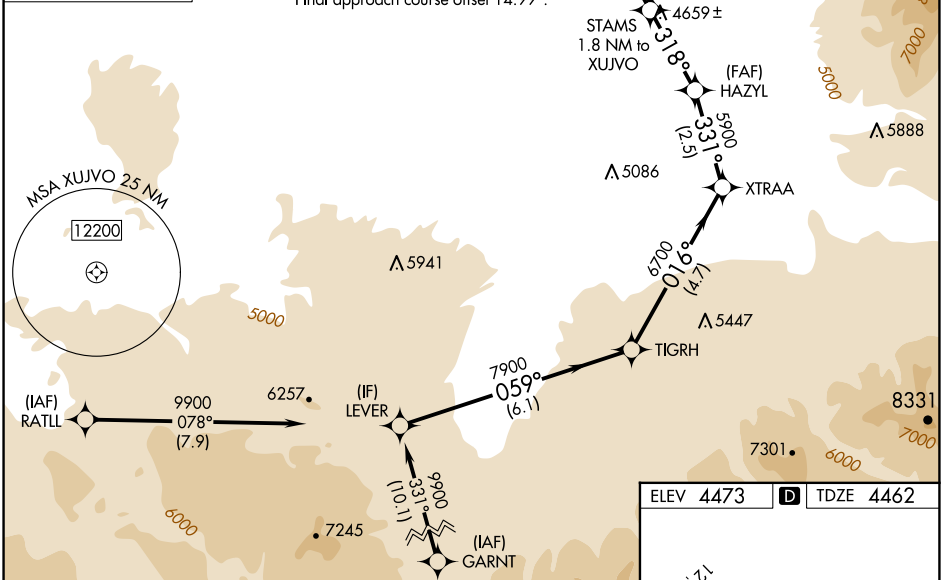
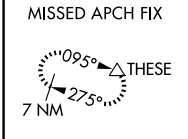
RNP APCH - GPS.

▼ For uncompensated Baro-VNAV systems, LNAV/VNAV NA below -30°C or above 54°C. Circling NA to Rwys 3, 11, 21 and 29.

⚠ -22°C

MISSED APPROACH: Climb to 5000 then climbing left turn to 10000 direct THESE and hold, continue climb-in-hold to 10000.

ATIS <b>135.425</b>	BIG SKY APP CON ★ <b>118.975 226.675</b>	BOZEMAN TOWER ★ <b>118.2 (CTAF) 0</b>	GND CON <b>121.8</b>	UNICOM <b>122.95</b>
------------------------	---	--	-------------------------	-------------------------



5000	10000	THESE			
↑	↖	△			
		STAMS 1.8 NM to XUJVO	HAZYL 5900	XTRAA 6700	TIGRH 7900
		1.2 NM to XUJVO			LEVER 9900
		5120	5900	6700	7900
		1.2 NM	0.6	2.3 NM	2.5 NM
				4.7 NM	6.1 NM
CATEGORY	A	B	C	D	
LNAV/VNAV	DA	4880-1½		418 (500-1½)	
LNAV MDA	4880-1	418 (500-1)		4880-1½	418 (500-1½)
CIRCLING	4940-1 467 (500-1)	4960-1 487 (500-1)	5160-2 687 (700-2)	5320-2¾ 847 (900-2¾)	

ELEV 4473	TDZE 4462
-----------	-----------

Rwy 11G-29G: 2802 X 80

TWR

GP 3.20°  
TCH 45

REIL Rwy 30  
HIRL Rwy 12-30  
MIRL Rwy 11-29

NW-1, 20 MAR 2025 to 17 APR 2025

NW-1, 20 MAR 2025 to 17 APR 2025