

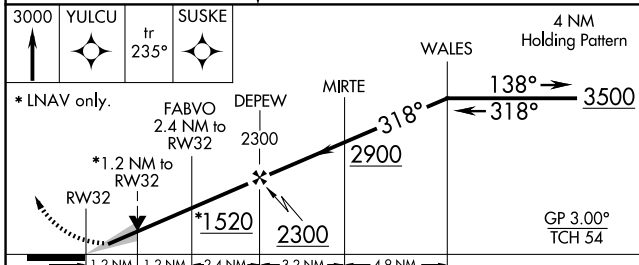
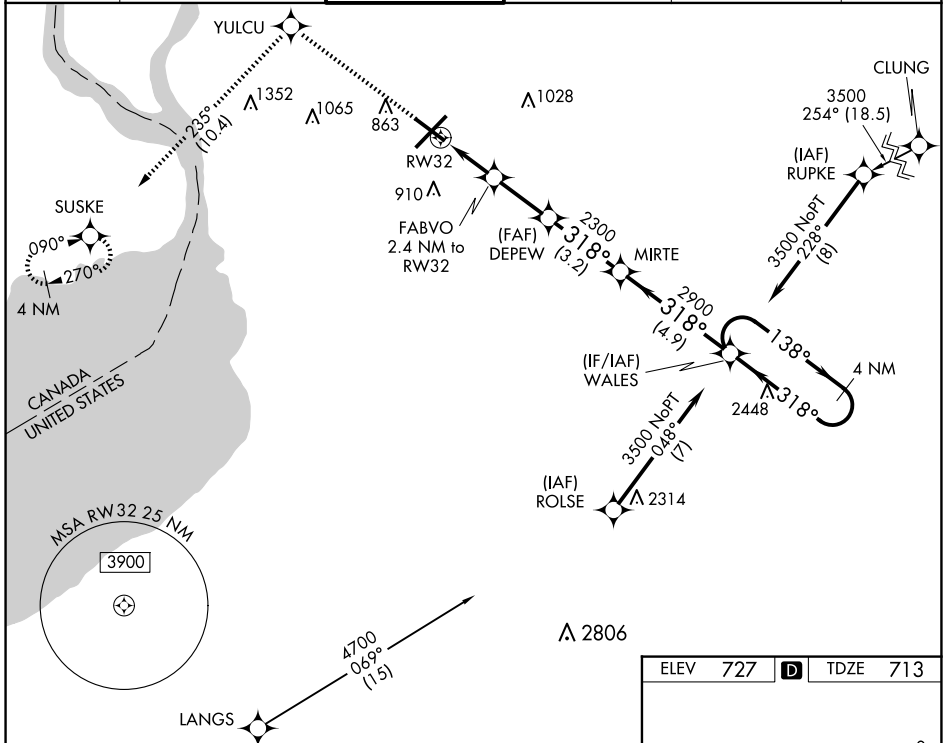
WAAS CH <b>81811</b> <b>W32A</b>	APP CRS <b>318°</b>	Rwy Idg TDZE Apt Elev	<b>6121</b> <b>713</b> <b>727</b>
--	------------------------	-----------------------------	---

# RNAV (GPS) RWY 32

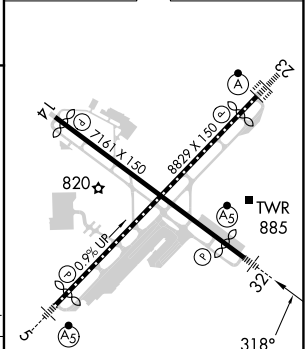
BUFFALO NIAGARA INTL (BUF)

RNP APCH - GPS	MALSR	MISSED APPROACH: Climb to 3000 direct YULCU on track 235° to SUSKE and hold.
For uncompensated Baro-VNAV systems LNAV/VNAV NA below -17°C or above 54°C. For inop ALS, increase LNAV/VNAV visibility all Cats to 1 SM. Inop table does not apply to LPV all Cats.		

D-ATIS <b>135.35</b>	BUFFALO APP CON <b>126.15 263.125</b>	BUFFALO TOWER <b>120.5 257.8</b>	GND CON <b>133.2 257.8</b>	CLNC DEL <b>124.7 257.8</b>	CPDLC
-------------------------	--	-------------------------------------	-------------------------------	--------------------------------	-------



ELEV 727	<b>D</b> TDZE 713
----------	-------------------



CATEGORY	A	B	C	D
LPV DA		913-1/2	200 (200-1/2)	
LNAV/VNAV DA		1092-5/8	379 (400-5/8)	
LNAV MDA	1140-1/2 427 (500-1/2)		1140-3/4 427 (500-3/4)	
CIRCLING	1200-1 473 (500-1)		1220-1 1/2 493 (500-1 1/2)	1340-2 613 (700-2)

REIL Rwy 14  
 TDZ/CL Rwys 5 and 23  
 HIRL Rwys 5-23 and 14-32

NE-2, 20 MAR 2025 to 17 APR 2025

NE-2, 20 MAR 2025 to 17 APR 2025