

APP CRS **055°**
 Rwy Idg **7569**
 TDZE **708**
 Apt Elev **727**

RNAV (RNP) Z RWY 5

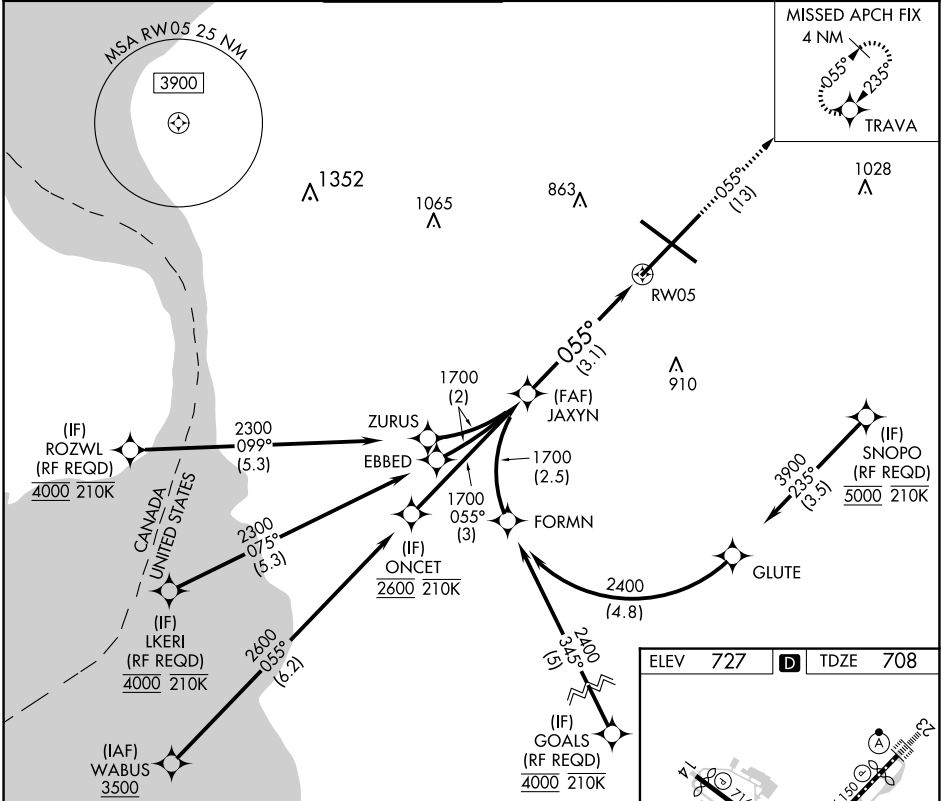
BUFFALO NIAGARA INTL (BUF)

▼ For uncompensated Baro-VNAV systems, procedure NA below -18°C (0°F) or above 54°C (130°F). GPS required. For inoperative MALS, increase RNP 0.10 all Cats visibility to 1¼. For inoperative MALS, increase RNP 0.30 all Cats visibility to 1½.



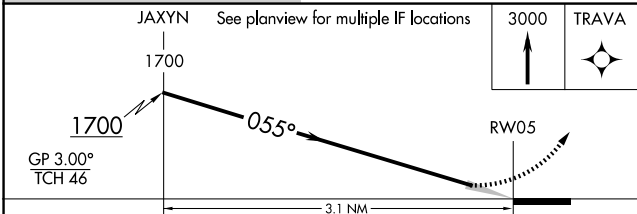
MISSED APPROACH: Climb to 3000 on the RNAV missed approach route to TRAVA and hold.

D-ATIS 135.35	BUFFALO APP CON 126.15 263.125	BUFFALO TOWER 120.5 257.8	GND CON 133.2 257.8	CLNC DEL 124.7 257.8	CPDLC
-------------------------	--	-------------------------------------	-------------------------------	--------------------------------	-------

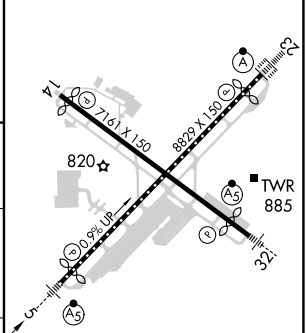


NE-2, 20 MAR 2025 to 17 APR 2025

NE-2, 20 MAR 2025 to 17 APR 2025



ELEV 727 **D** TDZE 708



CATEGORY	A	B	C	D
RNP 0.10 DA		1065/45	357 (400-¾)	
RNP 0.30 DA		1159/60	451 (500-1¼)	

AUTHORIZATION REQUIRED

REIL Rwy 14
 TDZ/CL Rwys 5 and 23
 HIRL Rwys 5-23 and 14-32