

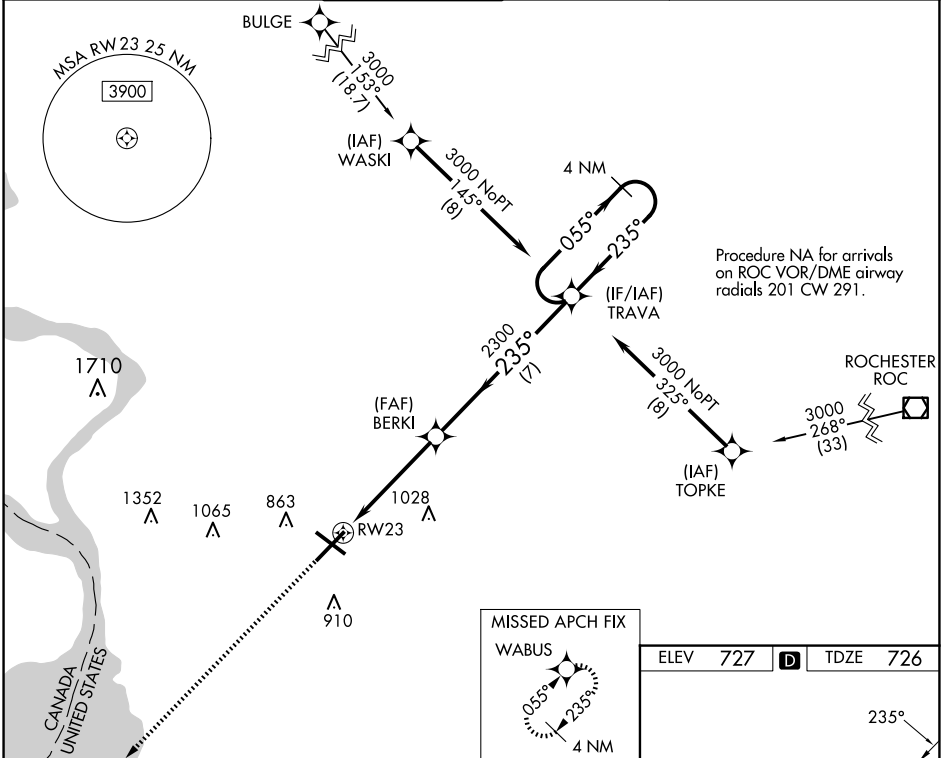
WAAS CH <b>77511</b> <b>W23A</b>	APP CRS <b>235°</b>	Rwy Idg TDZE Apt Elev	<b>7569</b> <b>726</b> <b>727</b>
--	------------------------	-----------------------------	---

# RNAV (GPS) Y RWY 23

BUFFALO NIAGARA INTL (BUF)

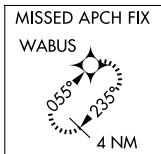
RNP APCH - GPS		ALSF-2	MISSED APPROACH: Climb to 3000 direct WABUS and hold.		
For uncompensated Baro-VNAV systems, LNAV/VNAV NA below -17°C or above 54°C.					

D-ATIS <b>135.35</b>	BUFFALO APP CON <b>126.15 263.125</b>	BUFFALO TOWER <b>120.5 257.8</b>	GND CON <b>133.2 257.8</b>	CLNC DEL <b>124.7 257.8</b>	CPDLC
-------------------------	--	-------------------------------------	-------------------------------	--------------------------------	-------

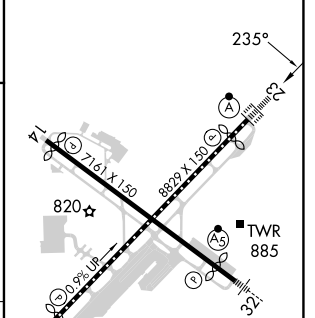
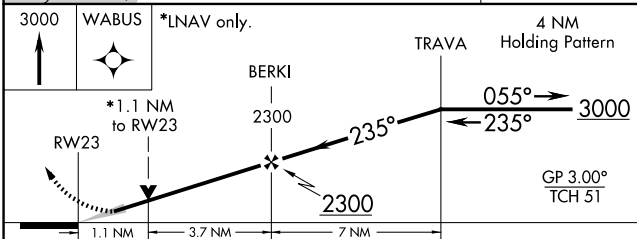


NE-2, 20 MAR 2025 to 17 APR 2025

NE-2, 20 MAR 2025 to 17 APR 2025



ELEV	727	TDZE	726
------	-----	------	-----



CATEGORY	A	B	C	D
LPV DA		926/18	200 (200-½)	
LNAV/VNAV DA		1050/30	324 (400-¾)	
LNAV MDA	1140/24	414 (500-½)	1140/40	414 (500-¾)
CIRCLING	1200-1	473 (500-1)	1220-1½	1340-2
			493 (500-1½)	613 (700-2)

REIL Rwy 14  
TDZ/CL Rws 5 and 23  
HIRL Rws 5-23 and 14-32