

WAAS CH <b>58200</b> <b>W12A</b>	APP CRS <b>123°</b>	Rwy Idg <b>10201</b> TDZE <b>1359</b> Apt Elev <b>1384</b>
--	------------------------	--

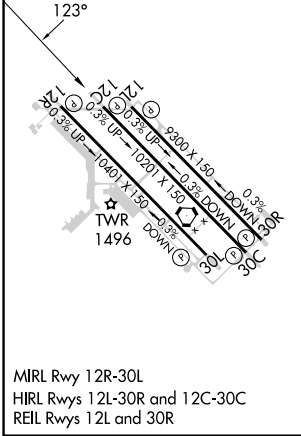
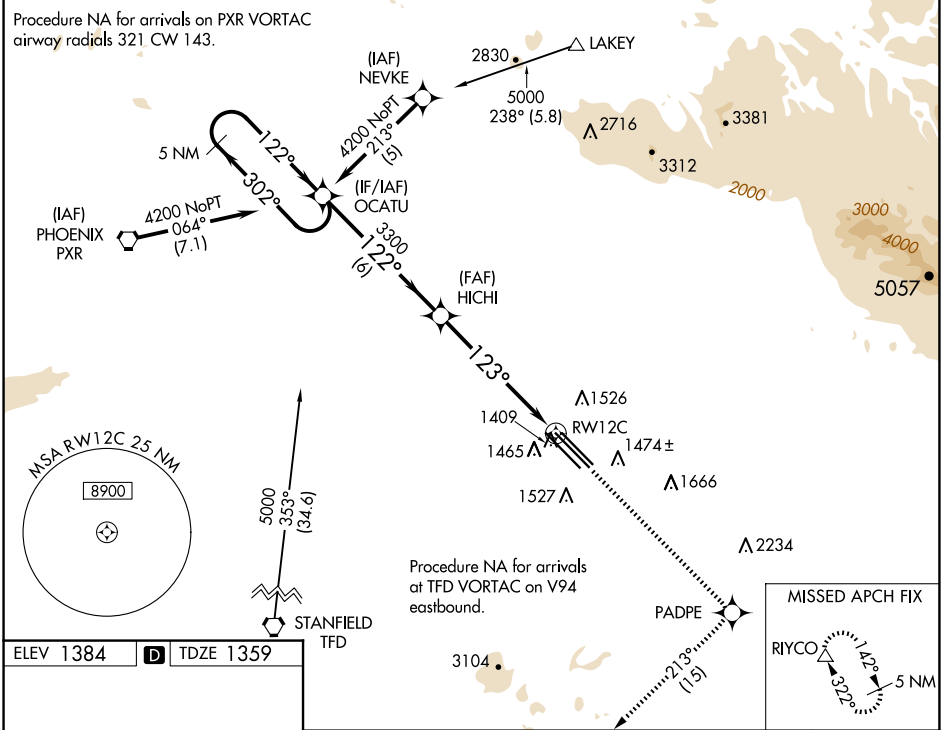
# RNAV (GPS) RWY 12C

MESA GATEWAY (IWA)

**⚠** DME/DME RNP-0.3 NA.  
**⚠** For uncompensated Baro-VNAV systems LNAV/VNAV NA below -17°C (2°F) or above 46°C (115°F).

MISSED APPROACH: Climb to 5000 direct PADPE and on 213° track to RIYCO and hold.

ATIS <b>133.5 270.275</b>	PHOENIX APP CON <b>124.9 353.8</b>	GATEWAY TOWER ★ <b>120.6 (CTAF) 289.4</b>	GND CON <b>128.25 275.8</b>	CLNC DEL <b>135.05</b>
------------------------------	---------------------------------------	--	--------------------------------	---------------------------



ELEV 1384	<b>D</b>	TDZE 1359																		
<table border="1"> <tr> <td>5 NM Holding Pattern</td> <td>OCATU</td> <td>5000</td> <td>PADPE</td> <td>213° tr</td> <td>RIYCO</td> </tr> <tr> <td>4200 ← 302°</td> <td>→ 122°</td> <td>122°</td> <td>3300</td> <td>123°</td> <td>1.1 NM to RWY 12C</td> </tr> <tr> <td>GP 3.00°</td> <td>TCH 50</td> <td>6 NM</td> <td>4.8 NM</td> <td>1.1</td> <td></td> </tr> </table>			5 NM Holding Pattern	OCATU	5000	PADPE	213° tr	RIYCO	4200 ← 302°	→ 122°	122°	3300	123°	1.1 NM to RWY 12C	GP 3.00°	TCH 50	6 NM	4.8 NM	1.1	
5 NM Holding Pattern	OCATU	5000	PADPE	213° tr	RIYCO															
4200 ← 302°	→ 122°	122°	3300	123°	1.1 NM to RWY 12C															
GP 3.00°	TCH 50	6 NM	4.8 NM	1.1																
CATEGORY	A	B	C	D	E															
LPV DA	1609-1 250 (300-1)																			
LNAV/VNAV DA	1686-1¼ 327 (400-1¼)																			
LNAV MDA	1740-1 381 (400-1)		1740-1¼ 381 (400-1¼)																	
CIRCLING	1840-1¼	456 (500-1¼)	1880-1½	2000-2	2020-2¼															
			496 (500-1½)	616 (700-2)	636 (700-2¼)															

PHOENIX, ARIZONA  
 Amdt 1C 17JUN21

33°18'N-111°39'W

# MESA GATEWAY (IWA)

# RNAV (GPS) RWY 12C

SW-4, 20 MAR 2025 to 17 APR 2025

SW-4, 20 MAR 2025 to 17 APR 2025