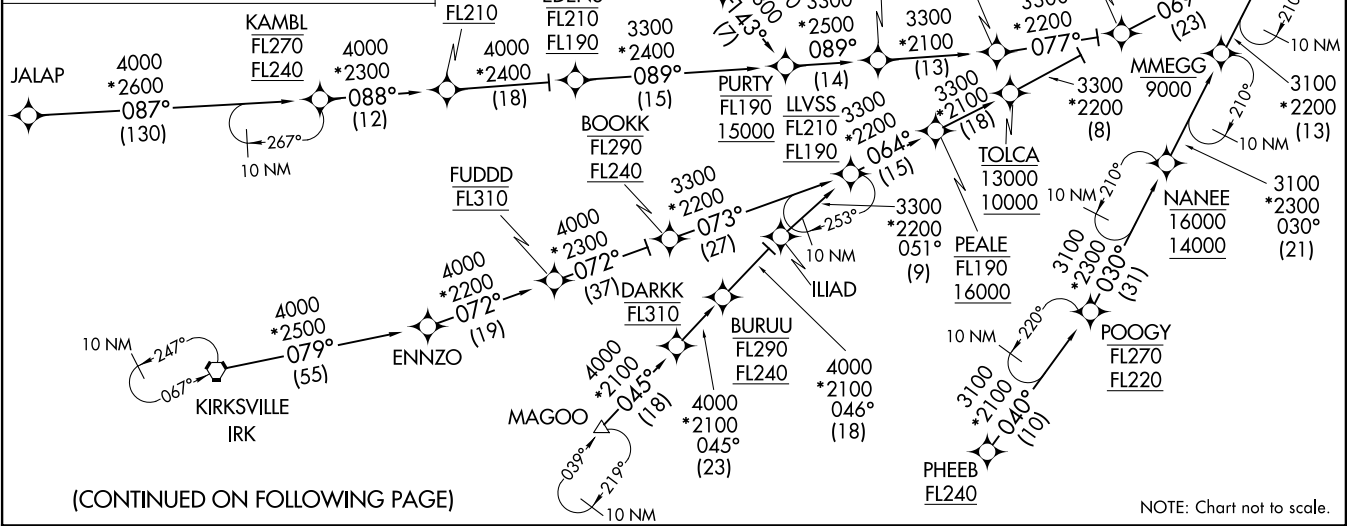


ENDEE SIX ARRIVAL (RNAV) Transition Routes
(ENDEE. ENDEE6) 31DEC20

CHICAGO MIDWAY INTL (MDW)
CHICAGO, ILLINOIS

- CHUMP TRANSITION (CHUMP.ENDEE6)
- DARKK TRANSITION (DARKK.ENDEE6)
- EDENS TRANSITION (EDENS.ENDEE6)
- FUDD TRANSITION (FUDD.ENDEE6)
- JALAP TRANSITION (JALAP.ENDEE6)
- KAMBL TRANSITION (KAMBL.ENDEE6)
- KIRKSVILLE TRANSITION (IRK.ENDEE6)
- LLVSS TRANSITION (LLVSS.ENDEE6)
- MAGOO TRANSITION (MAGOO.ENDEE6)
- NANEE TRANSITION (NANEE.ENDEE6)
- OHHMY TRANSITION (OHHMY.ENDEE6)
- PHEEB TRANSITION (PHEEB.ENDEE6)
- POOGY TRANSITION (POOGY.ENDEE6)
- UGGLY TRANSITION (UGGLY.ENDEE6)



(CONTINUED ON FOLLOWING PAGE)

ENDEE. ENDEE6) 20366

CHICAGO MIDWAY INTL (MDW)
CHICAGO, ILLINOIS

AL-81 (FAA)

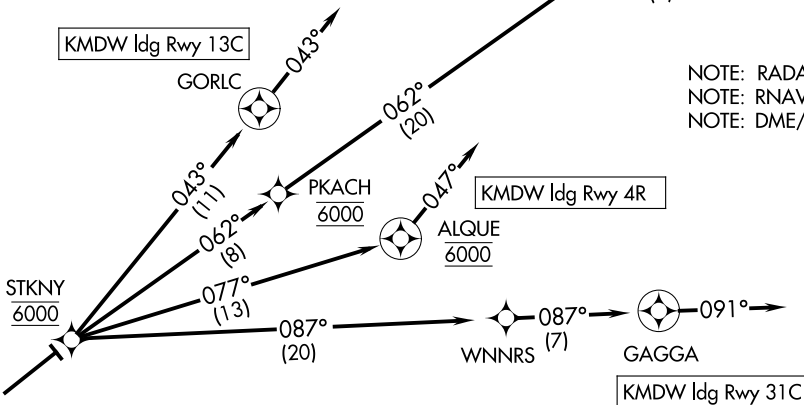
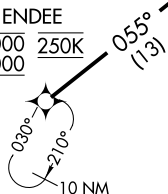
D-ATIS
132.75
CHICAGO APP CON
128.2 353.875

ENDEE SIX ARRIVAL (RNAV) Arrival Routes
(ENDEE. ENDEE6) 31 DEC 20

CHICAGO MIDWAY INTL (MDW)
CHICAGO, ILLINOIS

D-ATIS
132.75
CHICAGO APP CON
128.2 353.875

ENDEE
7000 250K
6000



NOTE: RADAR required.
NOTE: RNAV 1.
NOTE: DME/DME/IRU or GPS required.



ARRIVAL ROUTE DESCRIPTION

From ENDEE on track 055° to cross STKNY at 6000.

LANDING RWY 4R: From STKNY on track 077° to cross ALQUE at 6000, then on track 047°.

Expect ILS or LOC RWY 4R approach or RADAR vectors to final approach course.

LANDING RWY 13C: From STKNY on track 043° to GORLC, then on track 043°.

Expect RADAR vectors to final approach course.

LANDING RWY 22L: From STKNY on track 062° to cross PKACH at 6000, then on track 062°

to TUURN, then on track 090° to WADLL, then on track 095°. Expect RADAR vectors to final approach course.

LANDING RWY 31C: From STKNY on track 087° to WNNRS, then on track 087° to GAGGA, then on track 091°.

Expect RADAR vectors to final approach course.

NOTE: Chart not to scale.

(ENDEE. ENDEE6) 20366
ENDEE SIX ARRIVAL (RNAV) Arrival Routes

CHICAGO MIDWAY INTL (MDW)
CHICAGO, ILLINOIS

AL-81 (FAA)