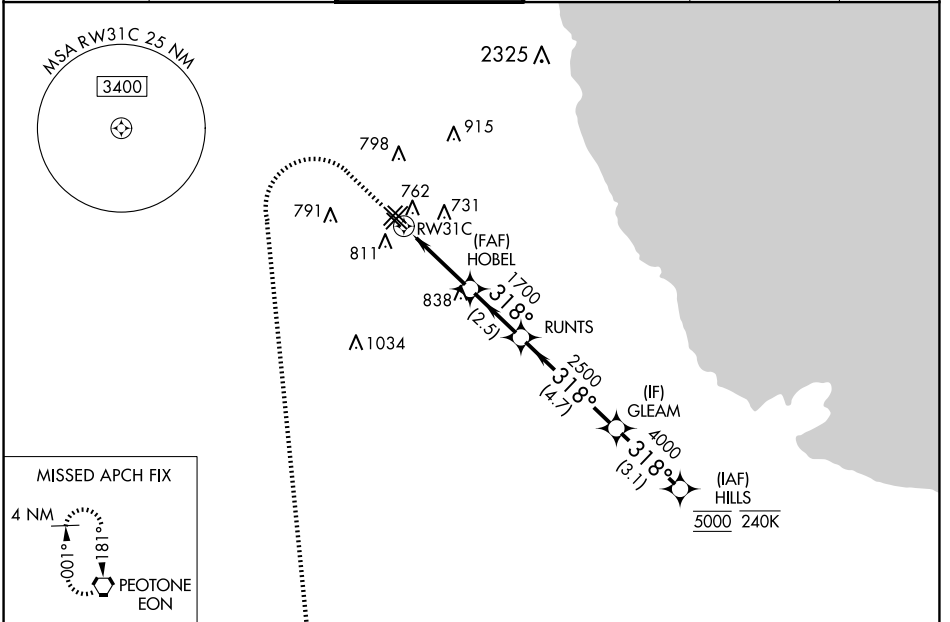


WAAS CH 50512 W31A	APP CRS 318°	Rwy Idg 5826 TDZE 613 Apt Elev 620
--	------------------------	---

RNAV (GPS) Z RWY 31C

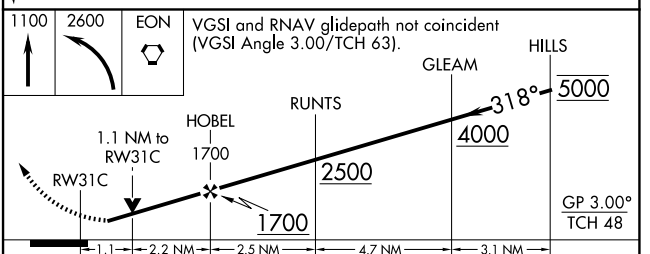
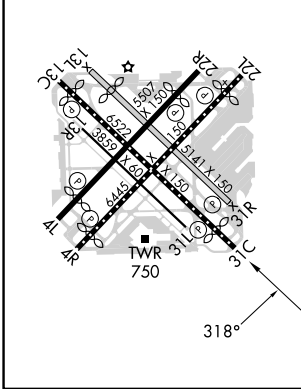
CHICAGO MIDWAY INTL (MDW)

RNP APCH - GPS. RADAR required.		MISSED APPROACH: Climb to 1100 then climbing left turn to 2600 direct EON VORTAC and hold.			
<p>▼ Circling Rwy 31R NA at night. Rwy 31C helicopter visibility reduction below RVR 4000 NA. ▲ For uncompensated Baro-VNAV systems, LNAV/VNAV NA below -19°C or above 54°C.</p>					
D-ATIS 132.75	CHICAGO APP CON 128.2 353.875	MIDWAY TOWER 135.2 269.125	GND CON 118.075	CLNC DEL 124.625	CPDLC



ELEV 620	D	TDZE 613
-----------------	----------	-----------------

HIRL Rws 4R-22L and 13C-31C
MIRL Rws 4L-22R, 13L-31R, and 13R-31L
REIL Rws 4R, 22L, and 31C
RLS Rws 13C and 31C



CATEGORY	A	B	C	D
LPV DA	863/40		250 (300-¾)	
LNAV/VNAV DA	953/50		340 (400-1)	
LNAV MDA	1020/55		1020/60	
	407 (400-1)		407 (400-1¼)	
C CIRCLING	1120-1		500 (500-1)	
			1340-2	
			720 (800-2)	
			1340-2¼	
			720 (800-2¼)	

EC-3, 20 MAR 2025 to 17 APR 2025

EC-3, 20 MAR 2025 to 17 APR 2025